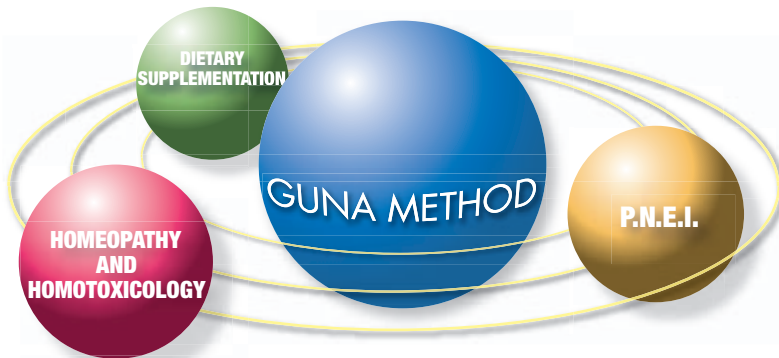


PHYSIOLOGICAL REGULATING MEDICINE

GUNA METHOD

How to treat diseases... and cure patients with natural methods



DEFINITION

PHYSIOLOGICAL REGULATING MEDICINE (GUNA Method) represents the most up-to-date integration of conventional medicine and homeopathic medicine. The GUNA Method includes the most recent knowledge about homeopathy, homotoxicology, Psycho-Neuro-Endocrine-Immunology (P.N.E.I.) and nutrition.

GUNA Method's innovative approach combines the essential elements of allopathy and homeopathy; integrating the allopathic element related to diagnostic technology and modern physiology, whereas evidence based homeopathy provides the therapeutic effects.

Physiological Regulating Medicine adds to classical homeopathy a new therapeutic concept of **restoring physiology** through communicating molecules such as *hormones, neuropeptides, interleukins, and growth factors* prepared in homeopathic dilutions, which are at the same physiological concentration as the biological milieu.

The homeopathic preparation method of "dilution-dynamization" makes these *communicating molecules* even more effective, providing a biofeedback mechanism capable of restoring the body's homeostatic balance.

METHODOLOGICAL PREMISES

PHYSIOLOGICAL REGULATING MEDICINE (GUNA Method) can be regarded as **the natural and logical development of Homotoxicology, just as the latter was the physiological development of Homeopathy**. It codifies the vision of the body as an Ecosystem governed by a neuro-immune-endocrine network and regulated by sensitive ligand-receptor control mechanisms (minimal and precise concentrations of hormones, cytokines and neuropeptides).

There are three main foundations supporting the complex structure of Physiological Regulating Medicine (GUNA Method):

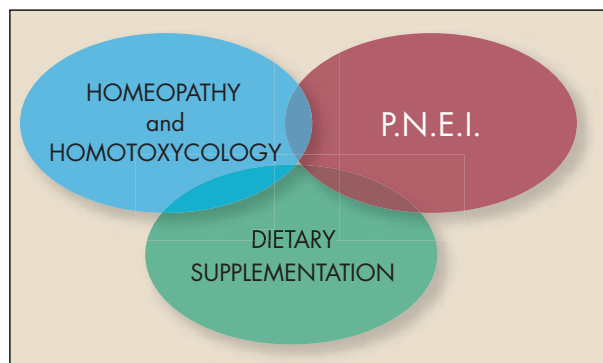


Fig.2

1. HOMEOPATHY AND HOMOTOXICOLOGY
2. P.N.E.I. (Psycho-Neuro-Endocrine-Immunology)
3. DIETARY SUPPLEMENTATION

1. Homeopathy implies:

- A **holistic vision** of human beings and the etiopathogenesis of their diseases
- The study of the pharmacological effects of homeopathized plant, mineral and animal principles on healthy humans and their usage depending on the *principle of similarity* and *effect inversion* in an ill subject, to manage the symptoms of the disease.
- **Treatment of the pathological area**, i.e. correction of the aspecific reactive structure able to condition “*why*” and “*how*” the subject becomes ill (use of constitutional and diathetic remedies).

Homotoxicology involves:

- **Functional and structural recovery** (*implemented via the detoxification and drainage of the connective tissue, emunctorial drainage, restoration of the physiological cell metabolism*).
- **Neutralization of etiological causes** (*implemented via the immunotherapeutic action of nosodes*).

2. PNEI involves:

- **Regulation of the neuroendocrine balance** (via the use of homeopathized Hormones and Neuropeptides).
- **Recovery of immune efficiency** (via the use of homeopathized Cytokines).

3. Dietary supplementation involves:

- **Plastic support for protein synthesis** (via integration with the MAP - Master Amino Acid Pattern - the ideal combination of amino acids for the human body).
- **Correct coenzyme activity** (Oligo elements and vitamins).
- **Effective protection from free radicals** (antioxidants).

Interpretations of these various action mechanisms tally with the wide variety of remedies offered by Guna's range of pharmacological products, which provide an effective means of implementing the therapeutic aspects of Physiological Regulating Medicine (Guna-Method).

ETIOPATHOGENESIS OF DISEASES ACCORDING TO PRM

In reference to Von Bertalanffy's theory, Physiological Regulating Medicine considers the human body as a **steady-state flow system**, meaning an open system into which exogenous stressors can penetrate or endogenous stressors leading to alteration of the **homeostatic balance** can develop.

Watching over the maintenance, i.e. the reestablishment of a homeostatic balance in the human system, is the **P.N.E.I. structure**: this is a complex organization in which SNC, the

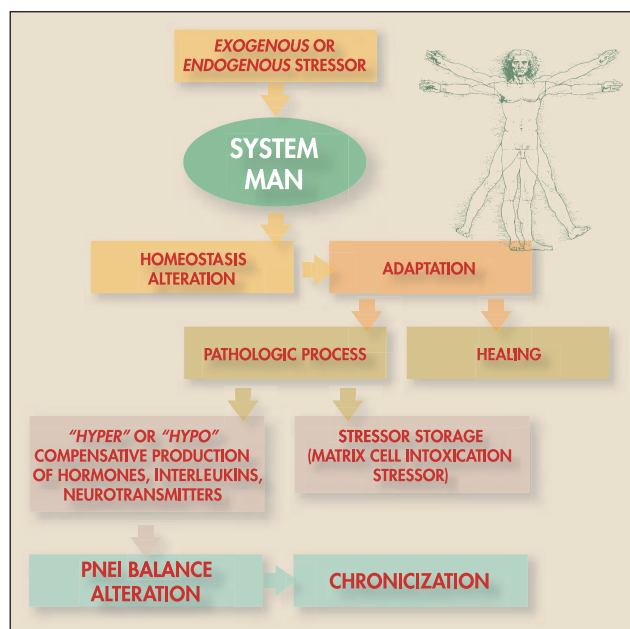


Fig.3

Endocrine System and the Immune System interact. Via neuropeptides, hormones and interleukins, the above bring about continuous adaptation of the homeostasis.

PHYSIOLOGICAL REGULATING MEDICINE (GUNA Method) focuses on:

1. **Earmarking the stressor at the level of the extra-cellular matrix.**
2. **Hyper or subcompensatory production of neuropeptides, hormones and interleukins.**

1. The **deposit of toxins** at the level of the interstitial space of the loose pericellular fibrillar connective tissue is both a positive and negative event for the human body. Although it is an adaptation mechanism to maintain a state of health, it is also the first sign of the chronicity of the disease. An intoxicated matrix no longer carries out its defense, structural or filtering functions properly. It will no longer allow the adequate passage of oxygen and nutrients from capillaries to the cell, which has to adapt to survive, in some cases, by differentiating itself (like the triggering of a cell differentiation in fibroblasts induced by the *shift* between aerobic and anaerobic metabolisms). The matrix will no longer allow the passage of information molecules such as hormones, neuropeptides and interleukins; it will not be able to carry out its immunological defense functions through the inflammatory process and the *reticular endothelial system (RES)* functions residing in it and its histological framework will change, involving towards fibrosis and even sclerosis.

2. The organism responds with a **complex network of adaptive events**, e.g. with defensive mechanisms, either inflammatory via the production of interleukins (*i.e. IL1 or TNF-alpha*) or hormones and neuropeptides (*i.e. prolactin or cortisol* to activate a response to stress, according to Selye) to every event upsetting the homeostatic balance.

To be biologically consistent, the activation of these neuro-immune-endocrine mechanisms, must limit itself to a contained timeframe, varying in relation to the pathogenesis of the disturbing element.

If due to a deficit in autologous defense capabilities, an alteration of the PNEI structure, or a suppressive pharmacological intervention, either pro-inflammatory interleukins or stress hormones and neuropeptides remain too long and in excessive quantities in the matrix medium, the target cells, to survive, **adapt to a non-response** by closing down their membrane receptors (**down-regulation**) and triggering a process leading to a chronic form of the disease.

Only by recovering the physiological function of the matrix (**via drainage**)

and reestablishing the correct functioning of membrane receptors (**via concentrations of relation molecules**) can cellular function and thus organic homeostasis and a state of health be recovered (Fig. 4).

THE CONCEPT OF "ADAPTATION TO THE NON - RESPONSE"

A ligand excess determines the **down regulation** of the membrane receptors. This is a mechanism for the maintenance of the homeostasis: in fact the cell, in order to main its functional balance, closes its receptors, but it leads first to retardation and then, to the loss of its function.

Fig.4

FROM THE MATRIX TO THE MORPHOFUNCTIONAL UNIT: THE "VESSEL - MATRIX - MEMBRANE RECEPTOR"

For a long time, the **loose pericellular fibrillar connective tissue** was interpreted and studied only for its function in supporting the parenchyma, unaware that the true role of this tissue is that of the **System of Base Regulation**, the interface between the "external world" (vessel system) and the "internal world" (cellular), the real, fundamental organic **matrix**.

Test evidence indicates that changes to the matrix affect cell dynamics - there is a vast amount of information that can be stored at this level and transmitted to cells as instructions for their physiological functioning.

In the matrix, the fragile relationships between the cytokines, neuropeptides and hormones coordinate and control the effective functioning of the ecosystem. The delicate systems that regulate the balance between health and illness are also found in the matrix - it is here that information of a **psycho-neuro-endocrine-immunological** nature (which coordinates and controls their functioning) travels via the cytokines and neural and endocrine substances.

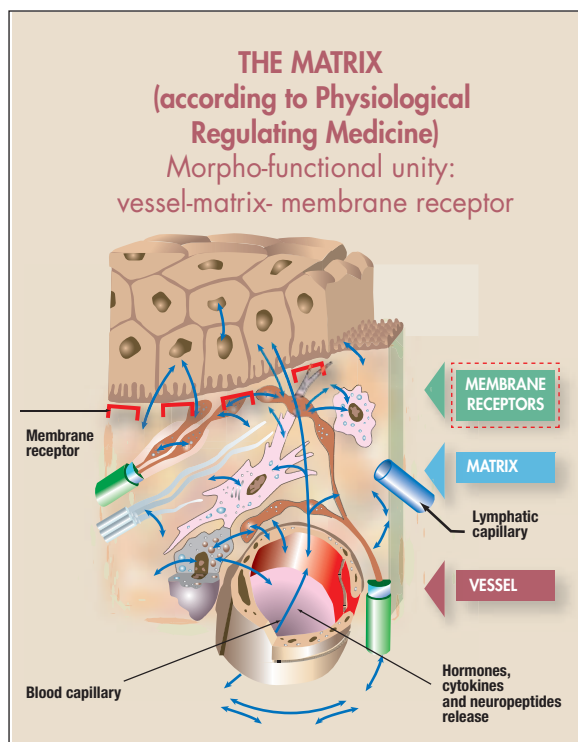


Fig.5

PHYSIOLOGICAL REGULATING MEDICINE (GUNA Method) focuses on the role played by the matrix in physiopathological processes and makes it the privileged target of its therapy.

It also redesigns the histology of the matrix and the interpretative model of its physiological function: no longer a static extra-cellular matrix, a space in between capillaries and cells, but a true **morphofunctional unit, the continuum "MEMBRANE VESSEL-MATRIX-RECEPTOR"** (Fig. 5).

The latter plays a particularly vital role in triggering and developing the pathological process, and will also play a major part in the healing process. GUNA's pharmacological products will thus target this important element (Fig. 6).

Importance of the matrix in PHYSIOLOGICAL REGULATING MEDICINE

The **membrane receptor** plays a very important role.

It's not only important the quantity of "ligand" (hormone, cytokine or neurotransmitter), but the receptor's ability to bind these molecules, i.e. their **affinity**.

Only the physiologic concentration is able to activate or reactivate the membrane receptors and, consequently, the right function of a target cell.

Fig.6

NEURO-IMMUNO-ENDOCRINE BREAKDOWN AND REPROGRAMMING

An accumulation of *stressors* (whether physical or mental) at the "vessel - matrix - receptor" unit level is a potential trigger for the onset and progression of a pathological process. Stressors cause the **dysregulation of neuro-immune-endocrine homeostasis** with a compensatory production, either excessive or deficient, of neuropeptides, cytokines and hormones. If they occur in concentrations outside their physiological range, these substances alter the structure and functioning of the cell membranes and, ultimately, the functioning of the entire cell. Therefore, everything indicates the need to act on the membrane receptors in order to restore the system's balance and health. (Fig. 7)

However, **neuro-endocrine-immunological regulation** is a

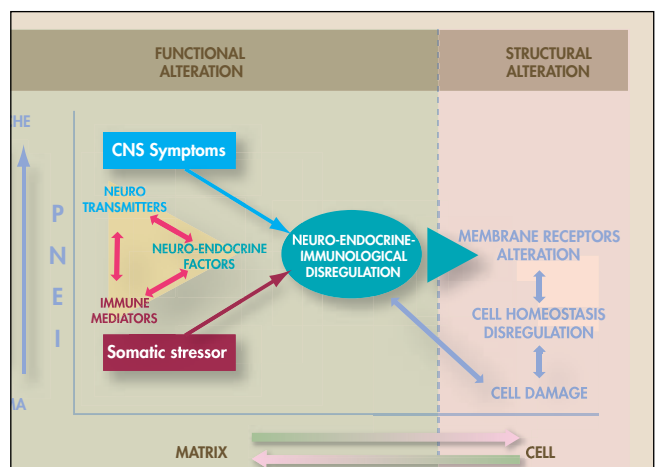


Fig.7

complex system in which one can only intervene therapeutically by using delicate elements such as **homeopathized cytokines, neuropeptides and hormones**. It is only in the concentrations found in GUNA remedies that these substances are capable of restoring the physiological functioning of the membrane receptors.

The action mechanism of the homeopathized cytokines, neuropeptides and hormones involves **sensitizing or activating some cell or plasmatic receptor units through an UP-REGULATION mechanism (a result of their extreme dilution, which is the same as these substances' physiological dilution: 10^{-6} - 10^{-12})**. This sensitization of receptors enables chain reactions (complex systems) to be triggered with the subsequent recovery of the biological function of the entire neuro-immune-endocrine network (Fig. 8).

LOW DOSE ACTION MECHANISM

The action mechanism of the homeopathic cytokines and homeopathic hormones consists in **sensitization or activation of some units of cellular or plasmatic receptors** (in virtue of their high dilution, the same this substances work physiologically at:

10^{-6} (microgramm) or 10^{-9} (nanogramm) for the cytokines and 10^{-12} (picogram) for the hormones. This receptors sensitization allows the trigger of **chain reactions** (complex systems) and a restart of the biological function of the whole neuro-immune-endocrine network.

Homeopathic cytokines and hormones work by bringing to the system an information able to activate **autoregulation mechanisms**.

Fig.8

HOMEOPATHIZED NEUROPEPTIDES, HORMONES AND CYTOKINES: THE GREAT INNOVATION OF PHYSIOLOGICAL REGULATING MEDICINE (GUNA METHOD)

The opportunity to use homeopathized cytokines, hormones and neuropeptides for therapeutic purposes originated primarily from the discovery that their physiological concentration, both in plasma and tissues, was very close to that of the low-medium dilutions used in homeopathy. Nowadays we use the term *low doses*.

Each cytokine and hormone has a **precise range of physiological concentrations** in which it carries out a **regulatory (physiological) effect**, and when one complies with this concentration, the number of molecules is consistent with the number of receptors on the target cells or, if one prefers, the **correct** number of

receptors is available for binding.

It is actually the physiological information (as the binding concentrations bring it fully in line with those concentrations corresponding to a condition of health) that ensures that homeopathized hormones, neuropeptides and cytokines are able to supply **information** to the system which can **activate self-regulation systems** - i.e. by establishing the correct supply of receptors on the cell membrane which results in the recovery of the endo-cellular function mechanisms.

Another element supporting the potential use of low doses of relation molecules, apart from the high affinity of the ligand membrane receptor, is the intrinsic feature of receptors defined as redundancy. Sensitization of 10 % of the membrane receptors specific for a hormone, interleukin or neuropeptide is able to activate 50% of the cellular function.

The conjunction of the two membrane receptor features, **affinity and redundancy**, easily explains how it is possible to achieve biological effects with minimal ligand concentrations (Fig. 9).

LOW DOSES

- The response of a cell to a messenger depends on the number of receptors occupied.
- A typical cell may have about 1000 receptors.
- Only a small fraction (10%) of the receptors need to be occupied to get a large (50%) response.

Fig.9

From a therapeutic point of view, we must stress that cytokines, hormones and neuropeptides, being biological molecules, do not follow the principle of inversion of effect depending on the variation of concentrations (as for many homeopathic remedies). Their biological efficacy is secondary to their physiological concentration; thus to limit the action of a pro-inflammatory cytokine (*IL1*, *TNF-alpha*, *IL6*, etc.) one does not use a high homeopathic dilution but a physiological concentration (4CH) of an antagonist Cytokine, i.e. at polarity Th2 or Th3 (for example *IL10* or *TGF-beta*, etc. or *Anti IL1*). The same is true for the use of hormones in low doses. When treating hyperestrogenism, for example, high dilution beta-estradiol would be less useful than progesterone in a physiological concentration (D6), which, by inducing negative feedback at the level of the pituitary gland, limits the production of gonadotropine and the subsequent sti-

mulation of the ovary, as in physiological control mechanisms of female hormonal functions. (Figg 10-11).

THE CONCEPT OF BALANCE AND THE USE OF THE CYTOKINES.

Talking about cytokines it's useful to talk about **BALANCE**, in particular of **balance Th1-Th2**.

In case of pathologies there is an imbalance; for example, in the **acute phlogistic pathologies** the Th1 scale pan is heavier: in these cases the therapy should make heavier the **Th2 (IL4, IL10, TGF beta)** scale pan in order to redress the balance.

On the contrary, in the **allergic pathologies** the Th2 scale pan is heavier: in these cases the therapy should make heavier the **Th1 (IL12, INF gamma)** scale pan in order to redress the balance.

The appropriate "rebalancing" cytokines will play their role working on the cell receptors.

Fig.10

THE CONCEPT OF BALANCE AND THE USE OF THE CYTOKINES.

As different cytokines can have different effects on the same cell, i.e. a cytokine can antagonize the effect of another one (for e. IL4/INF gamma), both targeted at the same cell, in the PHYSIOLOGICAL REGULATION THERAPY **antagonistic cytokines** and not different dilutions of the same cytokine are utilized in order to **brake a biological effect**.

Fig.11

It is easy to see how this strategy has led to an overlap between **allopathic Hormone Replacement** or **Immune Replacement Therapy** and **Homeopathic Bioregulatory Hormone** or Immune Therapy. The larger supply of receptors caused by the mixed regulatory balance, obtained by using specific concentration of molecules at low doses, enables the doses of synthesis medicines to be modulated, or even lowered, with a subsequent reduction in any collateral effects there may be.

PHYSIOLOGICAL REGULATING MEDICINE (THE GUNA METHOD): AN INTEGRATED AND MULTIFACTORIAL STRATEGY

One of the fundamental points in Physiological Regulating Therapy is the **holistic vision** of the human body as a **complex system** in which other equally complex (sub)-systems work together, at a coordinated level of interdependence.

Our approach to treating patients can thus be regarded as a **global strategy** in which nervous system, endocrine system and immune system communicate and cooperate with one other, and where any intervention in one of the systems will have an effect on all of the others.

Nowadays, we have access to medicines that can work on each target individually (primary or secondary focus of the pathology), by regularizing its function via the correct reprogramming of its cells and, at the same time, working on other targets that, bidirectionally, can affect or be affected by the altered functioning of these cells.

This innovative therapeutic methodology - implemented by **hormones, neuropeptides and cytokines in homeopathic doses (low doses)** - called "fine regulation", does not alienate "the work relating to the matrix" carried out by the **homeopathic remedies with drainage action**.

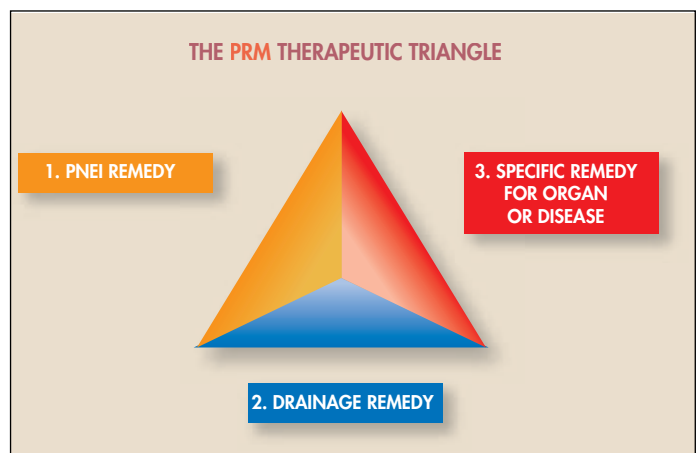
PHYSIOLOGICAL REGULATING MEDICINE (THE GUNA METHOD): THE THERAPEUTIC TRIANGLE

The clinical-therapeutic model of Physiological Regulating Medicine is linear.

The therapeutic planning includes three phases (Fig. 12):

- 1 REBALANCE THE PNEI
- 2 DRAINAGE
- 3 SYMPTOM TREATMENT

The vast range of Guna pharmaceutical products covers every one of these therapeutic needs.



1. PNEI REBALANCE

Reprogramming the neuro-immune-endocrine axis in both directions, namely psychosomatic and somatopsychic, is the core of Physiological Regulating Therapy. A sophisticated biological mechanism dictates that once introduced into the human body, *homeopathic micro doses of cytokines, hormones and neurotransmitters* - at the same concentration as in a physiological milieu - and selected homeopathic remedies, (of plant, mineral or animal origin) are capable of reducing, modulating and stimulating the reactivity of the **three main human systems (nervous, immune and endocrine)**. They guide it back within its physiological range without suppressing or inhibiting biological responses.

Depending on whether the alteration at the PNEI level is prevalently at a **general endocrine, neuro-endocrine** or **immune-endocrine** level, different medications or different combinations of medications to accompany the drainage medicine and symptomatic medicine can be used (Fig. 13).

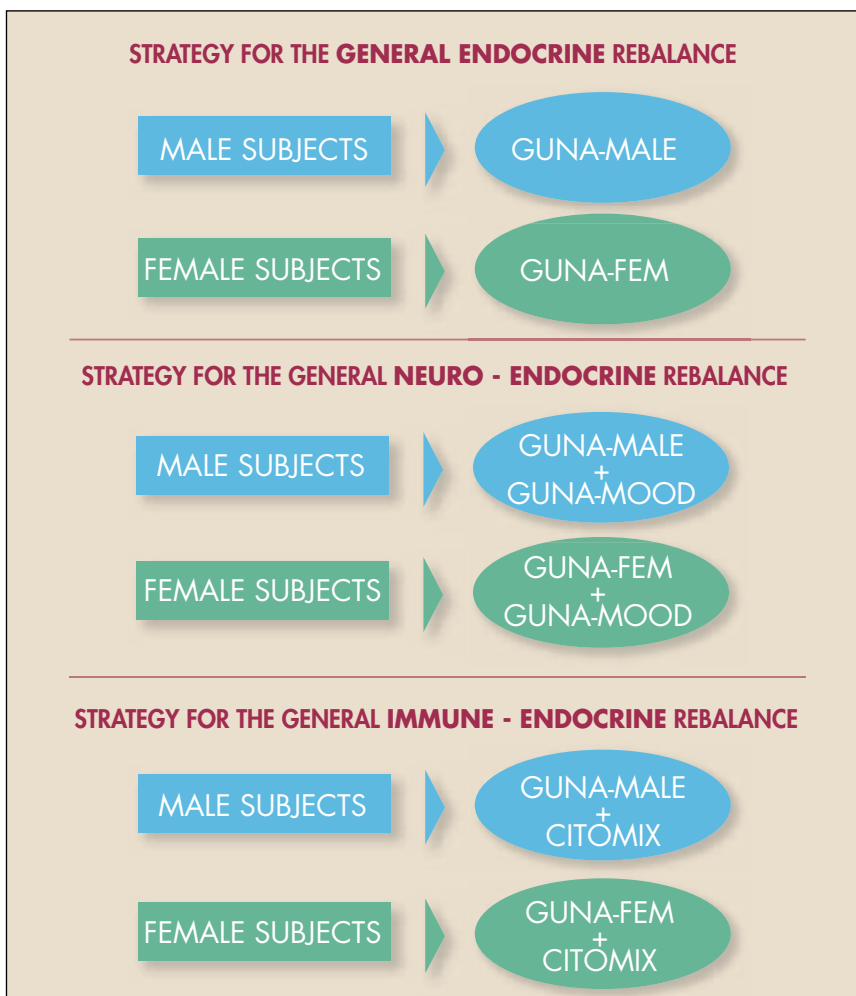


Fig.13

2. DRAINAGE

A detoxified and drained **extra-cellular matrix** will allow a cell to receive oxygen and nutrients and its receptors to be adequately activated by the relation molecules.

A detoxified and drained cell will be able to perform its metabolic function.

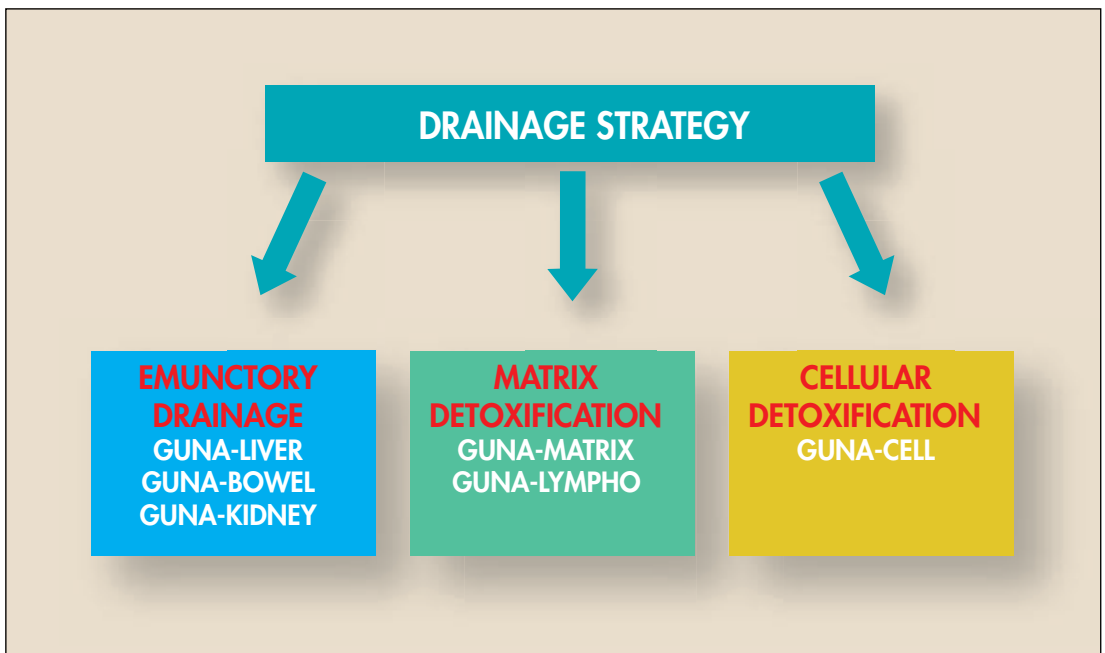
The **emunctory organs**, activated by specific drainage remedies, will strengthen their physiological excretory and toxin-release function.

Depending on how affected the organism is by the intoxication process and the structures concerned, either a drainage medication or another medication to associate with the PNEI therapy and the symptomatic medication can be chosen.

But *"...good drainage is already halfway to good therapy"*.

Drainage therapy in many cases can be a complete and exhaustive biological detoxification treatment.

The combined use of **cellular drainage**, **matrix drainage** and **emunctorial drainage** is in itself a therapeutic detoxification strategy, which is - in many cases - complete and efficacious. (Fig. 14).



A clinical assessment of the state of intoxication must precede the choice of drugs in the detoxification planning, as in the following chart: (Fig. 15).

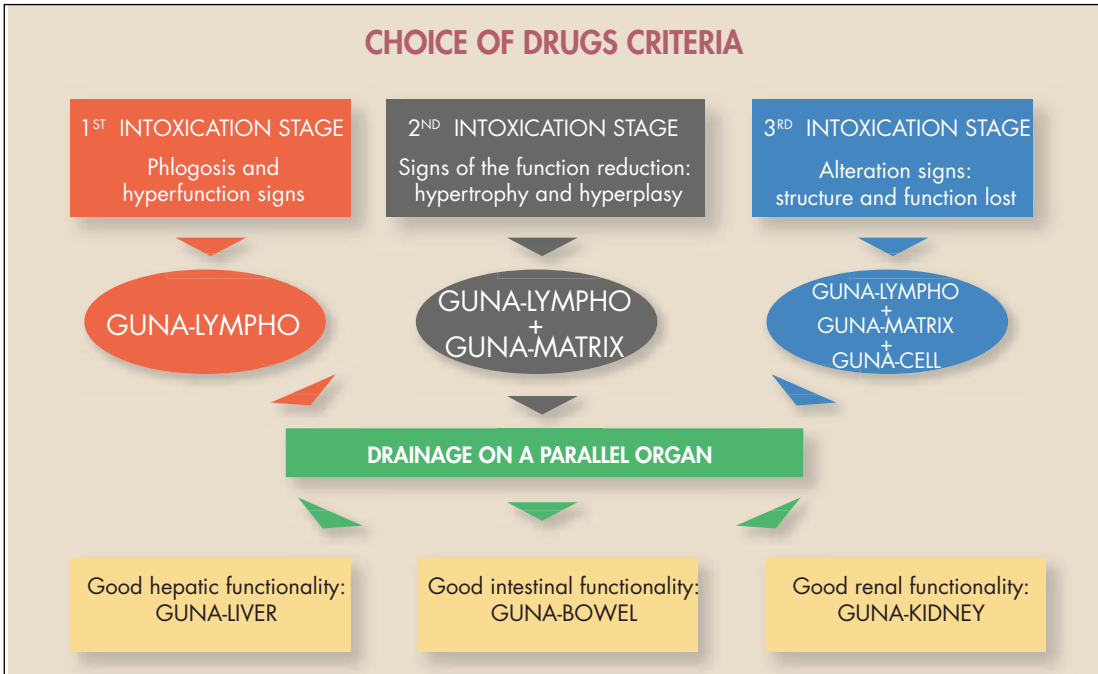


Fig.15

3. SYMPTOM TREATMENT

As in perfect team play, *interleukins*, *neurotransmitters* and *homeopathic hormones* as well as classic *homeopathic remedies* act on inflammatory diseases, thus leading to recovery.

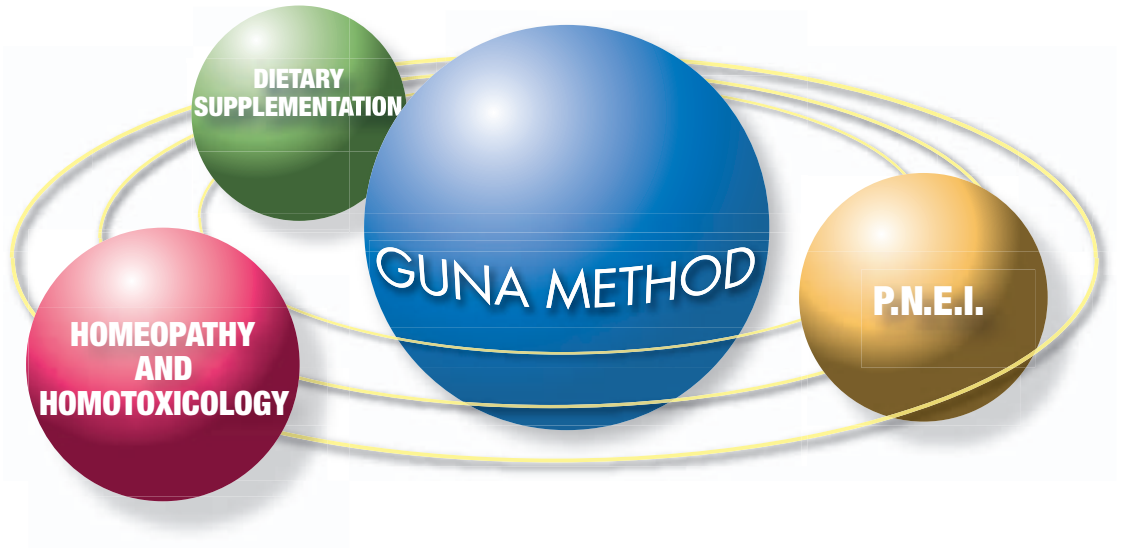
Among these substances, the specific remedies for every evolutionary phase of the inflammatory **process can be identified, and their action is simply extraordinary: calor, dolor, rubor et tumor** are all modulated - thus leading to a natural recovery.

This new therapeutic concept stems from both the homeopathic tradition and research studies in the field of **Molecular Biology**. Homeopathic micro doses of molecules conveying immune responses are capable of reactivating an adequate biological immune response (in the same concentrations as in a physiological milieu).

The inflammation process is consequently **modulated** - thus evolving and leading to full recovery and a considerable reduction in prognosis time.

Depending on the prevalent symptoms, various medications can be chosen to associate with PNEI and drainage medicine.

THERAPEUTIC INDEX



A

Abdominal bloating

- **Specific remedy:** ARD COLOSTRUM (1 tablet a day for 15-30 days)
- **Drainage remedy:** GUNA-BOWEL (10 drops 3 times a day for 30-60 days)
- **P.N.E.I. remedy:** EUBIOFLOR (10 drops 3 times a day for 30-60 days)

Abscess

- **Specific remedy:** GUNA-FLAM (10 drops every 15 minutes in acute phase; then 10 drops 3 times a day for 15 days) or GUNA-REACT (3 pellets every 15 minutes in acute phase; continue with 3 pellets 3 times a day for 15 days)
- **Drainage remedy:** GUNA-LYMPHO (10 drops 3 times a day for 30 days)
- **P.N.E.I. remedy:** CITOMIX (10 pellets 2 times a day for 2-3 days; then 3 pellets 3 times a day for 15 days)

Acne Rosacea

- **Specific remedies:** ANTI AGE VEIN (3 pellets 3 times a day for 30-60 days)
- **Drainage remedy:** GUNA-MATRIX (10 drops 3 times a day for 30-60 days)
- **P.N.E.I. remedy:** GUNA-FEM (10 drops 3 times a day for 30-60 days)

Acne Vulgaris

- **Specific remedy:** GUNA-FLAM (10 drops 3 times a day for 30-60 days). For topical use: TAMANU-ARNICA (a thin coat of cream on the affected areas twice a day)
- **Drainage remedy:** GUNA-LIVER (3-5 pellets 3 times a day for 30-60 days)
- **P.N.E.I. remedy:** GUNA-FEM (Female) (10 drops 3 times a day for 30-60 days)/GUNA-MALE (Male) (10 drops 3 times a day for 30-60 days)

Acrocyanosis

(Crocq's disease, related to Raynaud's)

- **Specific remedy:** ARD VESSEL (1 vial a day orally for 10 days a month for several months)
- **Drainage remedy:** ANTI AGE VEIN (3 pellets 3 times a day for 30-60 days)
- **P.N.E.I. remedy:** GUNA-FEM (Female) (10 drops 3 times a day for 30-60 days)/GUNA-MALE (Male) (10 drops 3 times a day for 30-60 days)

Addison's Disease

- **Specific remedy:** ANTI AGE STRESS (3 pellets twice a day for 30-60 days)
- **Drainage remedy:** GUNA-MATRIX (10 drops 3 times a day for 30-60 days)
- **P.N.E.I. remedy:** GUNA-FEM (Female) (10 drops 3 times a day for 30-60 days)/GUNA-MALE (Male) (10 drops 3 times a day for 30-60 days)

Adenoid Hypertrophy

- **Specific remedy:** GUNA-TONSILS (3 pellets 3 times a day for 30-60 days)
- **Drainage remedies:** GUNA-LYMPHO (10 drops 3 times a day for 30-60 days) + EUBIOFLOR (10 drops 4 times a day for 30-60 days)
- **P.N.E.I. remedy:** CITOMIX (3 pellets 3 times a day for 30-60 days)

Adiposity

Injectable therapy

- **Specific remedy:** OMEOFORMULA 1- Adiposity
- Standard protocol for i.m. administration: 1 ampoule 1-3 times a week according to severity and progress.
- Standard protocol according to mesotherapeutic technique using 1 or more ampoules per treatment: 1 treatment a week (average 8-10 sessions). For persisting and lasting results, maintenance therapy is recommended; this should be structured in "boosters" of 3-4 sessions once or twice a year.

For further information see Guna Brochure "Omeoformula"

Oral therapy

- **Specific remedies:** ARD-CHOLESTEROL (2 tablets 30 minutes before the main meals. Interrupt medication administration one day a week so as to support fat-soluble vitamins and unsaturated fatty acids absorption) + ANTI AGE SLIM* (3 pellets twice a day for 30-60 days)
- **Drainage remedies:** GUNA-DIUR (20-25 drops 3 times a day for 30-60 days) + GUNA-CELL (10 drops 3 times a day for 30-60 days)
- **P.N.E.I. remedy:** GUNA-FEM (10 drops 3 times a day for 30-60 days)/GUNA-MALE (10 drops 3 times a day for 30-60 days)

Adrenal Atrophy

- **Specific remedy:** ANTI AGE STRESS (3 pellets twice a day for 30-60 days)
- **Drainage remedy:** GUNA-MATRIX (10 drops 3 times a day for 30-60 days)
- **P.N.E.I. remedies:** GUNA-FEM (Female) (10 drops 3 times a day for 30-60 days)/GUNA-MALE (Male) (10 drops 3 times a day for 30-60 days) + ACTH D6* (20 drops twice a day for 30-60 days)

* Not yet available in the U.S.A.

Aging, premature

- **Specific remedy:** ARD VESSEL (1 vial a day orally for 10 days a months, for several months)
- **Drainage remedies:** GUNA-CELL (10 drops 3 times a day for 30-60 days) + GUNA-MATRIX (10 drops 3 times a day for 30-60 days)
- **P.N.E.I. remedy:** GUNA-FEM (Female) (10 drops 3 times a day for 30-60 days)/GUNA-MALE (Male) (10 drops 3 times a day for 30-60 days)

Agoraphobia

- **Specific remedy:** ANTI AGE STRESS (3 pellets every 30 minutes during acute attacks; otherwise, 3 pellets 3 times a day for 2 months as base-line therapy)
- **Drainage remedy:** GUNA-BOWEL (10 drops 3 times a day for 30-60 days)
- **P.N.E.I. remedy:** GUNA-FEM (Female) (10 drops 3 times a day for 30-60 days)/GUNA-MALE (Male) (10 drops 3 times a day for 30-60 days)

Albuminuria

- **Specific remedies:** GUNA-KIDNEY (10 drops 3 times a day for 30-60 days) + GUNA-FLAM (10 drops 3 times a day for 30-60 days)
- **Drainage remedy:** GUNA-LIVER (3-5 pellets 3 times a day for 30-60 days)
- **P.N.E.I. remedy:** CITOMIX (10 pellets twice a day for 2-3 days; continue with 3 pellets 3 times a day for 30-60 days)

Alcoholism

- **Specific remedies:** GUNA-ADDICT 1 + GUNA-ADDICT 2 (40 drops each twice a day for 30-60 days)
- **Drainage remedy:** GUNA-LIVER (3-5 pellets 3 times a day for 30-60 days)
- **P.N.E.I. remedy:** GUNA-MOOD (10 drops 3 times a day for 30-60 days)

Allergic rhinitis

See Hay fever

Allergic symptoms

- **Specific remedies:** GUNA-ALLERGY-TREAT (10 drops every 15 minutes for 2 hours in the acute phase; continue with 10 drops 3 times a day for a period according to progress) + GUNA-ALLERGY-PREV (10 drops 3 times a day for 30-60 days)
- **Drainage remedy:** GUNA-MATRIX (10 drops 3 times a day for 30-60 days)

- **P.N.E.I. remedy:** GUNA-MOOD (10 drops 3 times a day for 30-60 days)

Alzheimer's Disease (support therapy)

- **Specific remedy:** ARD VESSEL (1 vial a day orally for 10 days a month, for several months)
- **Drainage remedies:** GUNA-CELL (10 drops 3 times a day for 30-60 days) + GUNA-MATRIX (10 drops 3 times a day for 30-60 days)
- **P.N.E.I. remedy:** GUNA-FEM (Female)/GUNA-MALE (Male) (10 drops 3 times a day for 30-60 days)

Amenorrhea, functional

- **Specific remedies:** BETA-ESTRADIOL D6* (10 drops twice a day on days 5-20 of the cycle for 30-60 days) + PROGESTERONE D6* (10 drops twice a day on days 10-24 of the cycle, for 30-60 days)
- **Drainage remedies:** GUNA-MATRIX (10 drops 3 times a day for 30-60 days)+ GUNA-CELL (10 drops 3 times a day for 30-60 days)
- **P.N.E.I. remedy:** GUNA-FEM (10 drops 3 times a day for 30-60 days)

Anal Fissures

- **Specific remedy:** TAMANU-ARNICA (a thin coat of cream on the interested areas twice a day)
- **Drainage remedy:** GUNA-MATRIX (10 drops 3 times a day for 15-30 days)
- **P.N.E.I. remedy:** GUNA-DERMO (10 drops 3 times a day for 15-30 days)

Anemia

- **Specific remedy:** SON Formula* (5-7 tablets as supplementation to main meals for 30-60 days)
- **Drainage remedy:** GUNA-CELL (10 drops 3 times a day for 30-60 days)
- **P.N.E.I. remedy:** GUNA-FEM (Female) (10 drops 3 times a day for 30-60 days)/GUNA-MALE (Male) (10 drops 3 times a day for 30-60 days)

Ankylosing Spondylitis

Injectable therapy:

- **Specific remedies:** GUNA-POLYARTHRITIS + GUNA-THORACIC
 - Standard protocol for i.m. administration: 1-2 ampoules 1-3 times a week according to severity and progress.
 - Standard protocol according to mesotherapeutic technique using 1-2 ampou-

* Not yet available in the U.S.A.

les per treatment: 2 treatments per week in the first 2 weeks, then 1 treatment a week until pain relief (average 8-10 sessions). For chronic pathologies: continue with 1 treatment a week for 1 month until pain relief, then 1 treatment a month.

For further information and for the specific infiltration points see: www.gunainc.com - Products - All Products - Injectables for Pain Management and the Guna Brochure "Pain Management"

Oral therapy

- **Specific remedy:** GUNA-ARTHRO (10 drops 3 times a day for 30-60 days)
- **Drainage remedies:** GUNA-MATRIX + GUNA-LYMPHO (10 drops each 3 times a day for 30-60 days)
- **P.N.E.I. remedy:** GUNA-FLAM (10 drops 3 times a day for 30-60 days)

Anorexia

- **Specific remedies:** SON Formula* (5 tablets twice a day for 30-60 days)+FLOWER PLEX 37* (10 drops several times a day as long as needed according to the individual case)
- **Drainage remedy:** GUNA-MOOD (10 drops 3 times a day for 30-60 days)
- **P.N.E.I. remedy:** GUNA-FEM (10 drops 3 times a day for 30-60 days)

Antibiotics (Supportive therapies during antibiotic therapy)

- **Specific remedies:** EUBIOFLOR (10 drops 3 times a day for 60 days) + ARD COLOSTRUM (2 chewable tablets a day for 15 days)
- **Drainage remedy:** GUNA-MATRIX (10 drops 3 times a day for 30-60 days)
- **P.N.E.I. remedy:** CITOMIX (3 pellets morning and evening for 30-60 days)

Anxiety, symptoms of

- **Specific remedies:** ANTI AGE STRESS (3 pellets every 15 minutes in the acute phase; then 3 pellets twice a day for 60 days) and SEROTONINA D6* (20 drops twice a day for 60 days)
- **Drainage remedy:** GUNA-BOWEL (10 drops 3 times a day for 60 days)
- **P.N.E.I. remedy:** GUNA-MOOD (10 drops 3 times a day for 60 days)

Aphthae

(canker sores, foot and mouth disease)

- **Specific remedy:** CITOMIX (10 pellets twice a day for 2-3 days; continue with 3 pellets 3 times a day for 15 days)

- **Drainage remedy:** GUNA-BOWEL (10 drops 3 times a day for 30 days)
- **P.N.E.I. remedy:** GUNA-VIRUS (3 pellets every 15 minutes in the acute phase; then 3 pellets 3 times a day for 15-30 days)

Apophysitis

- **Specific remedy:** OSTEObIOS (10 drops 3 times a day for 30-60 days)
- **Drainage remedies:** GUNA-MATRIX (10 drops 3 times a day for 30-60 days) + GUNA-CELL (10 drops 3 times a day for 30-60 days)
- **P.N.E.I. remedy:** GUNA-FEM (10 drops 3 times a day for 30-60 days)

Appendicitis, chronic (alongside allopathic therapy)

- **Specific remedies:** CITOMIX (10 pellets 3 times a day for 30 days) + GUNA FLAM (10 drops 3 times a day for 30 days)
- **Drainage remedy:** ARD COLOSTRUM (2 chewable tablets a day for 15 days)
- **P.N.E.I. remedy:** GUNA-BOWEL (10 drops 3 times a day for 30 days)

Arteriosclerosis

- **Specific remedy:** ARD VESSEL (1 vial a day orally for 10 days a month, for several months)
- **Drainage remedies:** GUNA-LYMPHO (10 drops 3 times a day for 30-60 days) + GUNA-CELL (10 drops 3 times a day for 30-60 days)
- **P.N.E.I. remedy:** GUNA-FEM (10 drops 3 times a day for 30-60 days)/GUNA-MALE (10 drops 3 times a day for 30-60 days)

Arthropathy

- **Specific remedy:** GUNA-ARTHRO (10 drops 3 times a day for 30-60 days)
- **Drainage remedy:** GUNA-MATRIX (10 drops 3 times a day for 30-60 days)
- **P.N.E.I. remedy:** GUNA-FEM (10 drops 3 times a day for 30-60 days)/GUNA-MALE (10 drops 3 times a day for 30-60 days)

Asthenia, Neurocirculatory

- **Specific remedy:** TONICO-GUNA* (20 ml a day for several months)
- **Drainage remedy:** GUNA-CELL (10 drops 3 times a day for 30-60 days)
- **P.N.E.I. remedy:** GUNA-FEM (10 drops 3 times a day for 30-60 days)/GUNA-MALE (10 drops 3 times a day for 30-60 days)

* Not yet available in the U.S.A.

Asthma, Bronchial

- **Specific remedy:** GUNA-ALLERGY TREAT (10 drops 3 times a day for 30-60 days)
- **Drainage remedy:** GUNA-BOWEL (10 drops 3 times a day for 30-60 days)
- **P.N.E.I. remedy:** GUNA-MOOD (10 drops 3 times a day for 30-60 days)

Atheroma

- **Specific remedy:** ARD CHOLESTEROL (2 tablets 30 minutes before the two main meals to be taken with a half glass of water, for 2-3 months)
- **Drainage remedy:** ARD VESSEL (1 vial a day orally for 10 days per month, for some months)
- **P.N.E.I. remedy:** GUNA-FEM (10 drops 3 times a day for 30-60 days)/GUNA-MALE (10 drops 3 times a day for 30-60 days)

Athlete's Foot

See Interdigital mycosis

Atopic Dermatitis

- **Specific remedies:** GUNA-DERMO (10 drops 3 times a day for 30-60 days)+ GUNA-ALLERGY-PREV (10 drops 3 times a day for 30-60 days)
- **Drainage remedy:** GUNA-LIVER (3-5 pellets 3 times a day for 30-60 days)
- **P.N.E.I. remedy:** EUBIOFLOR (10 drops 3 times a day for 30-60 days)

Attention Deficit Hyperactivity Disorder (ADHD)

- **Specific remedy:** ARD-VESSEL (1 vial a day orally for 10 days a month, for at least 2 months) + MELATONINA 4CH* (20 drops 2 times a day for 30-60 days)
- **Drainage remedy:** GUNA-CELL (10 drops 3 times a day for 30-60 days)
- **P.N.E.I. remedy:** GUNA-FEM (10 drops 3 times a day for 30-60 days)/GUNA-MALE (10 drops 3 times a day for 30-60 days)

Auto Immune Disease (pain symptomatology)

Injectable therapy

- **Specific remedy:** GUNA-POLIARTHRITIS
 - Standard protocol for i.m. administration: 1-2 ampoules 1-3 times a week according to severity and progress.
 - Standard protocol according to mesotherapeutic technique using 1-2

** Not yet available in the U.S.A.*

ampoules per treatment: 2 treatments per week in the first 2 weeks, then 1 treatment a week until pain relief (average 8-10 sessions). For chronic pathologies: continue with 1 treatment a week for 1 month until pain relief, then 1 treatment a month.

For further information and for the specific infiltration points see: www.gunainc.com - Products - All Products - Injectables for Pain Management and the Guna Brochure "Pain Management"

Oral therapy

- **Specific remedy:** GUNA-TRAUMA (10 drops every 15 minutes in the acute phase; continue with 10 drops 3 times a day for 30-60 days)
- **Drainage remedies:** GUNA-MATRIX (10 drops 3 times a day for 30-60 days) + GUNA-LYMPHO (10 drops 3 times a day for 30-60 days)
- **P.N.E.I. remedy:** GUNA-FLAM (10 drops 3 times a day for 30-60 days)

B

Back pain (lower)

Injectable therapy:

- **Specific remedies:** GUNA-LUMBAR + GUNA-ISCHIAL and/or GUNA-MUSCLE and /or GUNA-NEURAL
 - Standard protocol for i.m. administration: 1-2 ampoules 1-3 times a week according to severity and progress.
 - Standard protocol according to mesotherapeutic technique using 1-2 ampoules per treatment: 2 treatments per week for the first 2 weeks, then 1 treatment a week until pain relief (average 8-10 sessions). For chronic pathologies: continue with 1 treatment a week for 1 month until pain relief, then 1 treatment a month.

For further information and for the specific infiltration points see: www.gunainc.com - Products - All Products - Injectables for Pain Management and the Guna Brochure "Pain Management"

Oral therapy:

- **Specific remedy:** GUNA-TRAUMA (10 drops several times a day according to the clinical picture; then 10 drops 3 times a day for 30-60 days)
- **Drainage remedy:** GUNA-MATRIX (10 drops 3 times a day for 30-60 days)

- **P.N.E.I. remedy** remedy: GUNA-ARTHRO (10 drops 3 times a day for 30-60 days)

Bed sores

See Pressure Ulcers

Blepharitis

- **Specific remedy**: BELLAPLEX* (3 pellets every hour in the acute phase. Continue with 3 pellets 3 times a day for 15-30 days)
- **Drainage remedy**: GUNA-LIVER (3-5 pellets 3 times a day for 15-30 days)
- **P.N.E.I. remedy** remedy: CYTOMIX (10 pellets twice a day for 2-3 days; continue with 3 pellets 3 times a day for 15-30 days)

Breast Toning

Injectable therapy:

- **Specific remedy**: OMEOFORMULA 4 - Breast + GUNA-COLLAGEN
 - Standard protocol for i.m. administration: 1 ampoule 1-3 times a week according to severity and progress.
 - Standard protocol according to mesotherapeutic technique using 1 or more ampoules per treatment: 1 treatment a week (average 8-10 sessions). For persisting and lasting results, maintenance therapy is recommended; this should be delivered in "boosters" of 3-4 sessions once or twice a year.

For further information see Guna Brochure "Omeoformula"

Oral therapy:

- **Specific remedy**: ANTI AGE SKIN (3 pellets 3 times a day for 60-90 days)
- **Drainage remedy**: GUNA-CELL (10 drops 3 times a day for 60-90 days)
- **P.N.E.I. remedy** remedy: GUNA-FEM (10 drops 3 times a day for 60-90 days)

Bronchitis

- **Specific remedy**: GUNA-NONI (one 10 ml dose 3 to 6 times a day for 30 days. Pediatric dosage: one 5 ml dose 3 to 6 times a day for 30 days)
- **Drainage remedy**: GUNA-LYMPHO (10 drops 3 times a day for 30 days)
- **P.N.E.I. remedy** remedy: CITOMIX (10 pellets twice a day for 2-3 days; continue with 3 pellets 3 times a day for 30 days)

Burns, Minor

- **Specific remedy**: TAMANU-ARNICA (apply a coat of cream on the interested areas several times a day)

- **Drainage remedy:** GUNA-LYMPHO (10 drops 3 times a day for 15-30 days)
- **P.N.E.I. remedy:** GUNA-FLAM (10 drops 3 times a day for 15-30 days)

Bursitis

- **Specific remedy:** GUNA-TRAUMA (10 drops every 15 minutes in the acute phase; continue with 10 drops 3 times a day for 15-30 days and longer)
- **Drainage remedy:** GUNA-LYMPHO (10 drops 3 times a day for 15-30 days and longer)
- **P.N.E.I. remedy:** GUNA-FLAM (10 drops 3 times a day for 15-30 days and longer)

C

Calcaneal Spur

- **Specific remedy:** M47* (15 drops twice a day for 30-60 days)
- **Drainage remedy:** GUNA-MATRIX (10 drops 3 times a day for 30-60 days)
- **P.N.E.I. remedy:** GUNA-FLAM (10 drops 3 times a day for 30-60 days)

Calcium Metabolism, dysfunction of

- **Specific remedy:** OSTEObIOS (10 drops 3 times a day for 30-60 days)
- **Drainage remedies:** GUNA-MATRIX (10 drops 3 times a day for 30-60 days) + GUNA-CELL (10 drops 3 times a day for 30-60 days)
- **P.N.E.I. remedy:** GUNA-FEM (10 drops 3 times a day for 30-60 days)/GUNA-MALE (10 drops 3 times a day for 30-60 days)

Candidiasis, Vaginal

- **Specific remedy:** NATUR 1* (1 ovule morning and evening for the first two weeks. Continue with one ovule in the evening for 45 days). In chronic recurrent forms: GUNA-TF CANDIDA (1 capsule a day from monday to friday for 60-90 days)
- **Drainage remedy:** EUBIOFLOR (10 drops 3 times a day for 30-60 days)

* Not yet available in the U.S.A.

- **P.N.E.I. remedy:** MYCOX (20 drops 3 times a day for the first 30 days. Then 10 drops 3 times a day for other 30 days)

Carpal Tunnel Syndrome

Injectable therapy:

- **Specific remedies:** GUNA-HANDFOOT + GUNA-NEURAL
 - Standard protocol for i.m. administration: 1-2 ampoules 1-3 times a week according to severity and progress.
 - Standard protocol according to mesotherapeutic technique using 1-2 ampoules per treatment: 2 treatments per week for the first 2 weeks, then 1 treatment a week until pain relief (average 8-10 sessions). For chronic pathologies: continue with 1 treatment a week for 1 month till pain relief, then 1 treatment a month.

For further information and for the specific infiltration points see: www.gunainc.com - Products - All Products - Injectables for Pain Management and the Guna Brochure "Pain Management"

Oral therapy:

- **Specific remedy:** GUNA-TRAUMA (10 drops several times a day according to the clinical picture; continue with 10 drops 3 times a day for 30-60 days)
- **Drainage remedy:** GUNA-MATRIX (10 drops 3 times a day for 30-60 days)
- **P.N.E.I. remedy:** GUNA-FLAM (10 drops 3 times a day for 30-60 days)

Cellulite

Injectable therapy:

- **Specific remedy:** OMEOFORMULA 2 - Cellulite (combine OMEOFORMULA 3 - Tissue Tone if there is soft cellulite and OMEOFORMULA 1 - Adiposity if there is localized adiposity as well)
 - Standard protocol for i.m. administration: 1 ampoule 1-3 times a week according to severity and progress.
 - Standard protocol according to mesotherapeutic technique using 1 or more ampoules per treatment: 1 treatment a week (average 8-10 sessions). For persisting and lasting results also a maintenance therapy is recommended; this should be delivered in "boosters" of 3-4 sessions once or twice a year.

For further information see Guna Brochure "Omeoformula"

Oral therapy:

- **Specific remedy:** ANTI AGE CELL* (3 pellets 3 times a day for 60-90 days)
- **Drainage remedy:** GUNA-DIUR (15 drops 3 times a day for 60-90 days)
- **P.N.E.I. remedy:** GUNA-FEM (10 drops 3 times a day for 60-90 days)

Cerebral Ischemia

- **Specific remedy:** ARD VESSEL (1 vial a day orally for 10 days per month for some months)
- **Drainage remedy:** GUNA-CELL (10 drops 3 times a day for 30-60 days)
- **P.N.E.I. remedy:** GUNA-FEM (10 drops 3 times a day for 30-60 days)/GUNA-MALE (10 drops 3 times a day for 30-60 days)

Cerebral Lesions; partial, fetal, in early childhood

- **Specific remedy:** BDNF 4CH* (20 drops twice a day for 30-60 days) + ARD VESSEL (1 vial a day orally for 10 days per months for several months)
- **Drainage remedy:** GUNA-LYMPH (10 drops 3 times a day for 30-60 days)
- **P.N.E.I. remedy:** GUNA-FEM (10 drops 3 times a day for 30-60 days)/GUNA-MALE (10 drops 3 times a day for 30-60 days)

Cerebroclerosis

- **Specific remedy:** ARD VESSEL (1 vial a day orally for 10 days per months for some months)
- **Drainage remedies:** GUNA-CELL (10 drops 3 times a day for 30-60 days) + GUNA-MATRIX (10 drops 3 times a day for 30-60 days)
- **P.N.E.I. remedy:** GUNA-FEM (10 drops 3 times a day for 30-60 days)/GUNA-MALE (10 drops 3 times a day for 30-60 days)

Cervicobrachial syndrome

Injectable therapy:

- **Specific remedies:** GUNA-SHOULDER + GUNA-POLYARTHRITIS and/or GUNA-MUSCLE and/or GUNA-NEURAL
 - Standard protocol for i.m. administration: 1-2 ampoules 1-3 times a week according to severity and progress.
 - Standard protocol according to mesotherapeutic technique using 1-2 ampoules per treatment: 2 treatments per week for the first 2 weeks, then 1 treatment a week until pain relief (average 8-10 sessions). For chronic pathologies: continue with 1 treatment a week for 1 month till pain relief, then 1 treatment a month.

For further information and for the specific infiltration points see: www.gunainc.com - Products - All Products - Injectables for Pain Management and the Guna Brochure "Pain Management"

Oral therapy:

- **Specific remedy:** GUNA-TRAUMA (10 drops several times a day according to the clinical picture; continue with 10 drops a day for 30-60 days)
- **Drainage remedy:** GUNA-MATRIX (10 drops 3 times a day for 30-60 days)
- **P.N.E.I. remedy:** GUNA-ARTHRO (10 drops 3 times a day for 30-60 days)

Cervicogenic headacheInjectable therapy:

- **Specific remedies:** GUNA-NECK + GUNA-NEURAL and/or GUNA-MUSCLE and/or GUNA-POLYARTHRITIS
 - Standard protocol for i.m. administration: 1-2 ampoules 1-3 times a week according to severity and progress.
 - Standard protocol according to mesotherapeutic technique using 1-2 ampoules per treatment: 2 treatments per week for the first 2 weeks, then 1 treatment a week until pain relief (average 8-10 sessions). For chronic pathologies: continue with 1 treatment a week for 1 month until pain relief, then 1 treatment a month.

For further information and for the specific infiltration points see: www.gunainc.com - Products - All Products - Injectables for Pain Management and the Guna Brochure "Pain Management"

Oral therapy:

- **Specific remedy:** GUNA-FLAM (10 drops several times a day according to the clinical picture; continue with 10 drops 3 times a day for 30-60 days)
- **Drainage remedies:** GUNA-MATRIX (10 drops 3 times a day for 30-60 days) + GUNA-LYMPHO (10 drops 3 times a day for 30-60 days)
- **P.N.E.I. remedy:** GUNA-MOOD (10 drops 3 times a day for 30-60 days)

Charcot's disease

See Intermittent Claudicatio

Cholangitis

- **Specific remedy:** GUNA-LIVER (3-5 pellets 3 times a day for 30-60 days)
- **Drainage remedy:** GUNA-KIDNEY (10 drops 3 times a day for 30-60 days)
- **P.N.E.I. remedy:** CITOMIX (3 pellets morning and evening for 30-60 days)

Cholecystitis

- **Specific remedy:** GUNA-LIVER (3-5 pellets 3 times a day for 30-60 days)
- **Drainage remedies:** GUNA-KIDNEY (10 drops 3 times a day for 30-60 days)

+ GUNA-CELL (10 drops 3 times a day for 30-60 days)

- **P.N.E.I. remedy:** CITOMIX (10 pellets twice a day for 2-3 days; continue with 3 pellets 3 times a day for 30-60 days)

Cholelithiasis (gall-stones)

- **Specific remedy:** GUNA-LIVER (3-5 pellets 3 times a day for 30-60 days)
- **Drainage remedy:** GUNA-LYMPHO (10 drops 3 times a day for 30-60 days)
- **P.N.E.I. remedy:** CITOMIX (3 pellets morning and evening for 30-60 days)

Chondropathy

- **Specific remedy:** GUNA-ARTHRO (10 drops 3 times a day for 30-60 days)
- **Drainage remedy:** GUNA-MATRIX (10 drops 3 times a day for 30-60 days)
- **P.N.E.I. remedy:** GUNA-TRAUMA (10 drops 3 times a day for 30-60 days)

Chronic Fatigue Syndrome (CFS/ME),

- **Specific remedies:** TONICO GUNA (20 ml a day for 30-60 days) + GUNA-MUSCLE
- **Drainage remedy:** GUNA-CELL (10 drops 3 times a day for 30-60 days)
- **P.N.E.I. remedy:** GUNA-FEM (10 drops 3 times a day for 30-60 days)/GUNA-MALE (10 drops 3 times a day for 30-60 days) or ANTI AGE STRESS (3 pellets 3 times a day for 30-60 days)

Chronic Obstructive Pulmonary Disease (COPD)

- **Specific remedy:** GUNA-NONI (10 ml 2-3 times a day for 30-60 days) or GUNA-COUGH (10 ml 3-6 times a day for 30-60 days)
- **Drainage remedies:** GUNA-LYMPHO (10 drops 3 times a day for 30-60 days) + GUNA-ADDICT 1 (40 drops 4 times a day for 30-60 days)
- **P.N.E.I. remedy:** GUNA-ADDICT 2 (40 drops 4 times a day for 30-60 days)

Cirrhosis, Hepatic

See Liver damage and Liver Cirrhosis.

Colics, Abdominal

- **Specific remedies:** GUNA-FLAM (10 drops every 15 minutes in the acute phase; continue with 10 drops 3 times a day for 15-30 days)+ BETA ENDORFINA 4CH* (20 drops several times a day in the acute phase; continue with 20 drops twice a day for 15-30 days)

* Not yet available in the U.S.A.

- **Drainage remedy:** GUNA-LIVER -liver colic- (3-5 pellets 3 times a day for 30-60 days) or GUNA-KIDNEY -kidney colic- (10 drops 3 times a day for 30-60 days) or GUNA-BOWEL -bowel colic- (10 drops 3 times a day for 30-60 days)
- **P.N.E.I. remedy:** ANTI-AGE STRESS (3 pellets 3 times a day for 30-60 days)

Colitis

- **Specific remedy:** GUNA-REACT (3 pellets 3 times a day for 30-60 days)
- **Drainage remedy:** GUNA-BOWEL (10 drops 3 times a day for 30-60 days)
- **P.N.E.I. remedy:** ANTI AGE STRESS (3 pellets 3 times a day for 30-60 days)

Colitis, Ulcerative (UC)

See Ulcerative colitis.

Condylomas (HPV)

- **Specific remedy:** GUNA-TF PAPILOMA (1 capsule monday to friday for 60-90 days)
- **Drainage remedies:** GUNA-MATRIX (10 drops 3 times a day for 30-60 days) + GUNA-LYMPHO (10 drops 3 times a day for 30-60 days)
- **P.N.E.I. remedy:** GUNA-VIRUS (3 pellets 3 times a day for 30-60 days)

Condylomatosis

- **Specific remedy:** GUNA-TF PAPILOMA (1 capsule a day from monday to friday for 60-90 days)
- **Drainage remedy:** GUNA-MATRIX (10 drops 3 times a day for 30-60 days)
- **P.N.E.I. remedy:** GUNA-VIRUS (3 pellets 3 times a day for 30-60 days)

Conjunctivitis

- **Specific remedy:** APISPLEX* (3 pellets every hour in the acute phase. Continue with 3 pellets 3 times a day for 7 days. In prevention of allergic conjunctivitis, 3 pellets 3 times a day for 30 days starting one month before the beginning of the pollen season). In allergic conjunctivitis, combine: GUNA-ALLERGY TREAT (10 drops every 15-30 minutes in the acute phase; continue with 10 drops 3 times a day for 30 days)
- **Drainage remedy:** GUNA-LIVER (3-5 pellets 3 times a day for 30-60 days)
- **P.N.E.I. remedy:** GUNA-REACT (3 pellets 3 times a day for 30-60 days)

Constipation

- **Specific remedy:** GUNA-BOWEL (10 drops every 15-30 days for 2-3 hours; continue with 10 drops 3 times a day for 30-60 days)
- **Drainage remedy:** GUNA-LIVER (3-5 pellets 3 times a day for 30-60 days)
- **P.N.E.I. remedies:** MELATONINA 4CH* (20 drops twice a day for 30-60 days) + ANTI-AGE STRESS (3 pellets 3 times a day for 30-60 days)

Cough, croupous

- **Specific remedy:** GUNA-COUGH (one 10 ml dose 3 to 6 times a day for 30 days. Paediatric dosage: one 5 ml dose 3 to 6 times a day for 30-60 days)
- **Drainage remedy:** GUNA-LYMPHO (10 drops 3 times a day for 30 days and longer)
- **P.N.E.I. remedy:** ANTI-AGE STRESS (3 pellets 3 times a day for 30 days)

Coughs

See Bronchitis, Laryngitis, Influenza.

Cradle Cap

- **Specific remedy:** GUNA-DERMO (10 drops 3 times a day for 30-60 days)
- **Drainage remedy:** GUNA-LIVER (3-5 pellets 3 times a day for 30-60 days)
- **P.N.E.I. remedy:** GUNA-FEM (10 drops 3 times a day for 30-60 days)/GUNA-MALE (10 drops 3 times a day for 30-60 days) + BETA ESTRADIOL D6* (10 drops 3 times a day for 30-60 days)

Cramps

- **Specific remedies:** GUNA-FLAM (10 drops every 15 minutes till remission of the acute symptomatology; continue with 10 drops 3 times a day for 15 days)
- **Drainage remedy:** GUNA-CELL (10 drops 3 times a day for 30 days and longer)
- **P.N.E.I. remedy:** ANTI-AGE STRESS (3 pellets 3 times a day for 30 days and longer)

Crohn's Disease (ileitis and colitis)

- **Specific remedy:** EUBIOFLOR (10 drops 3 times a day for 30-60 days) or/and GUNA-BOWEL (10 drops 3 times a day for 30-60 days) or/and GUNA-FLAM (10 drops 3 times a day for 30-60 days)

* Not yet available in the U.S.A.

- **Drainage remedy:** GUNA-MATRIX (10 drops 3 times a day for 30-60 days)
- **P.N.E.I. remedies:** GUNA-MOOD (10 drops 3 times a day for 30-60 days) or/and ANTI-AGE STRESS (3 pellets 3 times a day for 30-60 days)

Cystitis

- **Specific remedy:** GUNA-KIDNEY (10 drops 3 times a day for 30-60 days)
- **Drainage remedies:** EUBIOFLOR (10 drops 3 times a day for 30-60 days)+ GUNA-BOWEL (10 drops 3 times a day for 30-60 days)
- **P.N.E.I. remedy:** CITOMIX (10 pellets twice a day for 2-3 days; continue with 3 pellets 3 times a day for 30-60 days)

D

Dementia

See Alzheimer's disease; Depression

Depression, Endogenous

- **Specific remedy:** GUNA-MOOD (10 drops 3 times a day for 30-60 days)
- **Drainage remedy:** GUNA-BOWEL (10 drops 3 times a day for 30-60 days)
- **P.N.E.I. remedies:** GUNA-FEM (10 drops 3 times a day for 30-60 days)/GUNA-MALE (10 drops 3 times a day for 30-60 days) + MELATONINA 4CH* (20 drops twice a day for 30-60 days) + SEROTONINA D6* (20 drops twice a day for 30-60 days)

Depression, Reactive

- **Specific remedy:** GUNA-MOOD (10 drops 3 times a day for 30-60 days)
- **Drainage remedy:** GUNA-BOWEL (10 drops 3 times a day for 30-60 days)
- **P.N.E.I. remedies:** GUNA-FEM (10 drops 3 times a day for 30-60 days)/GUNA-MALE (10 drops 3 times a day for 30-60 days) + ANTI AGE STRESS (3 pellets twice a day for 30-60 days)

De Quervain's Disease

Injectable therapy:

- **Specific remedies:** GUNA-HANDFOOT + GUNA-NEURAL
 - Standard protocol for i.m. administration: 1-2 ampoules 1-3 times a week according to severity and progress.
 - Standard protocol according to mesotherapeutic technique using 1-2 ampoules per treatment: 2 treatments per week for the first 2 weeks, then 1 treatment a week until pain relief (average 8-10 sessions). For chronic pathologies: continue with 1 treatment a week for 1 month until pain relief, then 1 treatment a month.

For further information and for the specific infiltration points see: www.gunainc.com - Products - All Products - Injectables for Pain Management and the Guna Brochure "Pain Management"

Oral therapy

- **Specific remedy:** GUNA-TRAUMA (10 drops 3 times a day for 30-60 days)
- **Drainage remedies:** GUNA-MATRIX + GUNA-LYMPHO (10 drops each 3 times a day for 30-60 days)
- **P.N.E.I. remedy:** GUNA-FLAM (10 drops 3 times a day for 30-60 days)

Dermatitis, Acute

- **Specific remedies:** GUNA-DERMO (3 pellets every 15 minutes in the acute phase; continue with 3 pellets 3 times a day for 15 days) + TAMANU ARNICA (on average apply twice a day for 15-30 days)
- **Drainage remedies:** EUBIOFLOR (10 drops 3 times a day for 30 days and longer)+ GUNA-LIVER (3-5 pellets 3 times a day for 30 days and longer)
- **P.N.E.I. remedy:** ANTI AGE STRESS (3 pellets 3 times a day for 30 days and longer)

Dermatitis, Chronic

- **Specific remedies:** GUNA-DERMO (3 pellets every 15 minutes in the acute phase; continue with 3 pellets 3 times a day for 30-60 days) + TAMANU ARNICA (on average apply twice a day for 30-60 days)
- **Drainage remedies:** EUBIOFLOR (10 drops 3 times a day for 30-60 days)+ GUNA-LIVER (3-5 pellets 3 times a day for 30-60 days)
- **P.N.E.I. remedies:** ANTI AGE SKIN (3 pellets 3 times a day for 30-60 days) + FGF 4CH* (20 drops twice a day for 30-60 days)

Dermatomycosis

(ringworm of the nails)

- **Specific remedies:** GUNA-DERMO (10 drops 3 times a day for 30-60 days) + MYCOX (20 drops 3 times a day for the first 30 days. Continue with 10 drops 3 times a day for other 30 days). It is also advisable to apply 3/5 drops in the interested part.
- **Drainage remedy:** GUNA-LYMPHO (10 drops 3 times a day for 30-60 days)
- **P.N.E.I. remedy:** CITOMIX (3 pellets morning and evening for 30-60 days)

Desquamation

- **Specific remedies:** GUNA-DERMO (10 drops 3 times a day for 30-60 days) + TAMANU ARNICA (on average apply twice a day for 15-30 days)
- **Drainage remedies:** EUBIOFLOR (10 drops 3 times a day for 30-60 days) + GUNA-LIVER (3-5 pellets 3 times a day for 30-60 days)
- **P.N.E.I. remedies:** ANTI AGE SKIN (3 pellets 3 times a day for 30-60 days) + FGF 4CH* (20 drops twice a day for 30-60 days)

Diarrhea

- **Specific remedy:** ARD COLOSTRUM (2 tablets a day for 4-5 days in the acute phase)
- **Drainage remedy:** GUNA-KIDNEY (10 drops 3 times a day for 15-30 days)
- **P.N.E.I. remedy:** EUBIOFLOR (10 drops 3 times a day for 15-30 days)

Dispareunia

- **Specific remedy:** NATUR 2* (1 topical application morning and evening for 60 days; continue with 1 application a day and before sexual intercourse)
- **Drainage remedy:** GUNA-LYMPHO (10 drops 3 times a day for 30-60 days)
- **P.N.E.I. remedies:** GUNA-FEM (10 drops 3 times a day for 30-60 days) + BETA ESTRADILOLO D6* (20 drops twice a day for 60 days)

Dizziness

See Vertigo and Meniere's disease.

Dysbiosis, Intestinal

- **Specific remedy:** ARD COLOSTRUM (1 chewable tablet a day for 30-60 days)
- **Drainage remedy:** EUBIOFLOR 1 (10 drops 3 times a day for 30-60 days)

- **P.N.E.I. remedy:** MYCOX (20 drops 3 times a day for the first 30 days. Continue with 10 drops 3 times a day for other 30 days)

Dysentery, symptoms of

- **Specific remedy:** ARD-COLOSTRUM (2 chewable tablets a day for 15 days)
- **Drainage remedy:** GUNA-LIVER (3-5 pellets 3 times a day for 15-30 days and longer)
- **P.N.E.I. remedy:** EUBIOFLOR (10 drops 3 times a day for 30-60 days)

Dyslipidemia

(mild to moderate)

- **Specific remedy:** ARD CHOLESTEROL (2 tablets 30 minutes before the two main meals to be taken with one half glass of water for 90 days)
- **Drainage remedy:** GUNA-LIVER (3-5 pellets 3 times a day for 30-60 days)
- **P.N.E.I. remedy:** GUNA-FEM (10 drops 3 times a day for 30-60 days)/GUNA-MALE (10 drops 3 times a day for 30-60 days)

Dysmenorrhea

- **Specific remedy:** GUNA-PMS (10 drops every 30 minutes as a shock therapy; continue with 10 drops 3 times a day for 30-60 days)
- **Drainage remedy:** GUNA-FLAM (10 drops 3 times a day for 30-60 days)
- **P.N.E.I. remedy:** GUNA-FEM (10 drops 3 times a day for 30-60 days)

Dyspepsia

(gastric indigestion)

- **Specific remedy:** GUNA-DIGEST (10 drops every 15-30 minutes in the acute phase; continue with 10 drops 3 times a day for 30-60 days)
- **Drainage remedy:** GUNA-LIVER (3-5 pellets 3 times a day for 30-60 days)
- **P.N.E.I. remedy:** ANTI AGE STRESS (3 pellets every 15 minutes in the acute phase; continue with 3 pellets 3 times a day for 60 days)

Dysuria

- **Specific remedy:** GUNA-KIDNEY (10 drops 3 times a day for 30-60 days)
- **Drainage remedy:** GUNA-BOWEL (10 drops 3 times a day for 30-60 days)
- **P.N.E.I. remedies:** ANTI AGE STRESS 3 pellets 3 times a day for 60 days) and/or EUBIOFLOR (10 drops 3 times a day for 30-60 days)

E

Eczema

- **Specific remedies:** GUNA-DERMO (10 drops 3 times a day for 30-60 days) + TAMANU ARNICA (apply a thin coat of cream on the affected areas several times a day)
- **Drainage remedy:** GUNA-LIVER (3-5 pellets 3 times a day for 30-60 days)
- **P.N.E.I. remedy:** GUNA-MOOD (10 drops 3 times a day for 30-60 days)

Edema

- **Specific remedy:** GUNA-FLAM (10 drops every 15 minutes in the acute phase; continue with 10 drops 3 times a day for 15 days)
- **Drainage remedy:** GUNA-DIUR (15-20 drops 3 times a day for 30-60 days)
- **P.N.E.I. remedy:** GUNA-LYMPHO (10 drops 3 times a day for 30-60 days)

Ejaculation, Premature

- **Specific remedy:** ANTI AGE STRESS (3 pellets every 15 minutes in the hours preceding sexual intercourse; continue with 3 pellets 3 times a day for 60 days)
- **Drainage remedies:** GUNA-CELL (10 drops 3 times a day for 30-60 days) + GUNA-ADDICT 2 (40 drops 4 times a day for 30-60 days)
- **P.N.E.I. remedies:** GUNA-MALE (10 drops 3 times a day for 30-60 days) + SEROTONINA D6* (20 drops twice a day for 30-60 days) + MELATONINA D6* (20 drops twice a day for 30-60 days)

Emaciation

- **Specific remedy:** SON FORMULA* (7-10 tablets as supplementation to main meals for 60 days)
- **Drainage remedy:** GUNA-CELL (10 drops 3 times a day for 30-60 days)
- **P.N.E.I. remedy:** GUNA-FEM (10 drops 3 times a day for 30-60 days)/GUNA-MALE (10 drops 3 times a day for 30-60 days)

Epicondylitis

Injectable therapy

- **Specific remedies:** GUNA-SHOULDER + GUNA-NEURAL
- Standard protocol for i.m. administration: 1-2 ampoules 1-3 times a week according to severity and progress.
- Standard protocol according to mesotherapeutic technique using 1-2 ampoules per treatment: 2 treatments per week for the first 2 weeks, then 1 treatment a week until pain relief (average 8-10 sessions). For chronic pathologies: continue with 1 treatment a week for 1 month until pain relief, then 1 treatment a month.

For further information and for the specific infiltration points see: www.gunainc.com - Products - All Products - Injectables for Pain Management and the Guna Brochure "Pain Management"

Oral therapy

- **Specific remedy:** GUNA-TRAUMA (10 drops every 15 minutes in the acute phase; continue with 10 drops 3 times a day for 30 days)
- **Drainage remedies:** GUNA-MATRIX (10 drops 3 times a day for 30-60 days) + GUNA-LYMPHO (10 drops 3 times a day for 30-60 days)
- **P.N.E.I. remedy:** GUNA-FLAM (10 drops 3 times a day for 30-60 days)

Esophagitis

See also Gastro-Esophageal Reflux Disease.

Excitability, Hyperactivity

- **Specific remedies:** ANTI AGE STRESS (3 pellets 2-3 times a day for 30-60 days) + SEROTONINA D6* (20 drops twice a day for 30-60 days)
- **Drainage remedy:** GUNA-BOWEL (10 drops 3 times a day for 30-60 days)
- **P.N.E.I. remedies:** GUNA-FEM (10 drops 3 times a day for 30-60 days) /GUNA-MALE (10 drops 3 times a day for 30-60 days) + MELATONINA D6* (20 drops twice a day for 30-60 days)

Exostosis

- **Specific remedy:** M47* (10 drops 3 times a day for 30-60 days)
- **Drainage remedies:** GUNA-MATRIX (10 drops 3 times a day for 30-60 days)+ GUNA-LYMPHO (10 drops 3 times a day for 30-60 days)
- **P.N.E.I. remedy:** GUNA-FLAM (10 drops 3 times a day for 30-60 days)

* Not yet available in the U.S.A.

Eye Irritation

- **Specific remedies:** APIS PLEX* - Allergic conjunctivitis (3 pellets every hour in the acute phase. Continue with 3 pellets 3 times a day for 30 days) or BELLAPLEX* infective conjunctivitis (3 pellets every hour in the acute phase. Continue with 3 pellets 3 times a day for 30 days)
- **Drainage remedy:** GUNA-LIVER (3-5 pellets 3 times a day for 30 days or longer)

F

Fat Intolerance

- **Specific remedy:** ARD COLOSTRUM (2 tablets a day for 30-60 days)
- **Drainage remedy:** GUNA-LIVER (3-5 pellets 3 times a day for 30-60 days)
- **P.N.E.I. remedy:** GUNA-FEM (10 drops 3 times a day for 30-60 days)/GUNA-MALE (10 drops 3 times a day for 30-60 days)

Fatty Liver

- **Specific remedy:** GUNA-LIVER (3-5 pellets 3 times a day for 30-60 days)
- **Drainage remedy:** GUNA-MATRIX (10 drops 3 times a day for 30-60 days)
- **P.N.E.I. remedy:** GUNA-FEM (10 drops 3 times a day for 30-60 days)/GUNA-MALE (10 drops 3 times a day for 30-60 days)

Fever

- **Specific remedies:** GUNA-FLAM (10-20 drops every 2-3 hours in the acute phase)
In flu: GUNA-FLU (1 tube every 6 hours in the acute phase).
- **Drainage remedy:** GUNA-LIVER (3-5 pellets 3 times a day during fever symptoms)
- **P.N.E.I. remedy:** In cases of fever of unknown origin: CITOMIX (3 pellets 3 times a day for several days)

Fibroma

- **Specific remedies:** EMBRYO RERIO D4 STAGE I-II-III* (30 drops of stage I + 15 drops of stage II + 15 drops of stage III 3 times a day for long time)
- **Drainage remedies:** GUNA-LYMPHO (10 drops 3 times a day for 30-60 days)+ GUNA-MATRIX (10 drops 3 times a day for 30-60 days)
- **P.N.E.I. remedy:** CITOMIX (3 pellets 3 times a day for 30-60 days)

Fibroma of the breast

(Fibrocystic Breast Disease)

- **Specific remedies:** EMBRYO RERIO D4 STAGE I-II-III* (30 drops of stage I + 15 drops of stage II + 15 drops of stage III 3 times a day for long time)
- **Drainage remedy:** GUNA-LYMPHO (10 drops 3 times a day for 30-60 days)
- **P.N.E.I. remedy:** CITOMIX (3 pellets morning and evening for 30-60 days)

Fibromyalgia

Injectable therapy

- **Specific remedies:** GUNA-MUSCLE + GUNA-NEURAL
 - Standard protocol for i.m. administration: 1-2 ampoules 1-3 times a week according to severity and progress.
 - Standard protocol according to mesotherapeutic technique using 1-2 ampoules per treatment: 2 treatments per week for the first 2 weeks, then 1 treatment a week until pain relief (average 8-10 sessions). For chronic pathologies: continue with 1 treatment a week for 1 month until pain relief, then 1 treatment a month.

For further information and for the specific infiltration points see: www.gunainc.com Products - All Products - Injectables for Pain Management and the Guna Brochure "Pain Management"

Oral therapy

- **Specific remedy:** GUNA-TRAUMA (10 drops every 15 minutes in the acute phase; continue with 10 drops 3 times a day for 30-60 days)
- **Drainage remedies:** GUNA-MATRIX (10 drops 3 times a day for 30-60 days) + GUNA-LYMPHO (10 drops 3 times a day for 30-60 days)
- **P.N.E.I. remedy:** GUNA-FLAM (10 drops 3 times a day for 30-60 days)

Flatulence

- **Specific remedy:** ARD COLOSTRUM (1 tablet a day for 15-30 days)
- **Drainage remedy:** GUNA- BOWEL (10 drops 3 times a day for 30-60 days)

* Not yet available in the U.S.A.

- **P.N.E.I. remedy:** EUBIOFLOR (10 drops 3 times a day for 30-60 days)

Folliculitis

- **Specific remedies:** GUNA-DERMO (10 drops 3 times a day for 30-60 days) + TAMANU ARNICA (apply a thin coat of cream on the affected area several times a day)
- **Drainage remedy:** GUNA-LIVER (3-5 pellets 3 times a day for 30-60 days)
- **P.N.E.I. remedy:** CITOMIX (10 pellets twice a day for 2-3 days; continue with 3 pellets 3 times a day for 30-60 days)

Frigidity (Low Libido)

- **Specific remedy:** GUNA-MOOD (10 drops 3 times a day for 30-60 days, when depression is prevalent) or ANTI AGE STRESS (3 pellets twice a day for 30-60 days, when anxiety polarity is prevalent)
- **Drainage remedy:** GUNA-CELL (10 drops 3 times a day for 30-60 days)
- **P.N.E.I. remedy:** GUNA-FEM (10 drops 3 times a day for 30-60 days) + OMEOSTER* (3 pellets 3 times a day for 30-60 days)

Frozen Shoulder

See Periarthritis, Humeroscapular

Furunculosis

- **Specific remedies:** GUNA-FLAM (10 drops 3 times a day for 30-60 days) + GUNA-DERMO (10 drops 3 times a day for 30-60 days). Local application: TAMANU ARNICA (on average 2 applications a day)
- **Drainage remedy:** GUNA-LIVER (3-5 pellets 3 times a day for 30-60 days)
- **P.N.E.I. remedy:** GUNA-FEM (10 drops 3 times a day for 30-60 days)/GUNA-MALE (10 drops 3 times a day for 30-60 days)

G

Gangrene, diabetic, arteriosclerotic (atherosclerotic)

- **Specific remedies:** ARD VESSEL (1 vial a day orally for 10 days per month for several months) + ANTI AGE VEIN (3 pellets 3 times a day for 30-60 days)
- **Drainage remedies:** GUNA-MATRIX (10 drops 3 times a day for 30-60 days)+ GUNA-LYMPHO (10 drops 3 times a day for 30-60 days) + GUNA-CELL (10 drops 3 times a day for 30-60 days)
- **P.N.E.I. remedy:** GUNA-FEM (10 drops 3 times a day for 30-60 days)/GUNA-MALE (10 drops 3 times a day for 30-60 days)

Gastric indigestion

See Dyspepsia

Gastritis, acute and cronic

- **Specific remedy:** GUNA-STOMACH (10 drops every 15-30 minutes in the acute phase; continue with 10 drops 3 times a day for 30-60 days)
- **Drainage remedy:** GUNA-MATRIX (10 drops 3 times a day for 30-60 days)
- **P.N.E.I. remedy:** ANTI AGE STRESS (3 pellets 3 times a day for 30-60 days)

Gastritis, Atrophic

- **Specific remedy:** GUNA-STOMACH (10 drops 3 times a day for 30-60 days)
- **Drainage remedy:** GUNA-MATRIX (10 drops 3 times a day for 30-60 days)
- **P.N.E.I. remedy:** GUNA-STRESS (3 pellets 3 times a day for 30-60 days)

Gastroenteritis

- **Specific remedies:** GUNA-STOMACH (10 drops every 15-30 minutes in the acute phase; continue with 10 drops 3 times a day for 30-60 days) + EUBIO-FLOR (10 drops 3 times a day for 30-60 days)
- **Drainage remedy:** GUNA-KIDNEY (10 drops 3 times a day for 30 days and longer)
- **P.N.E.I. remedy:** CITOMIX (10 pellets twice a day for 2-3 days; continue with 3 pellets 3 times a day for 15 days)

Gastro-Esophageal Reflux Disease (GERD)

- **Specific remedy:** GUNA-COUGH (10 drops 3 times a day for 30-60 days)
- **Drainage remedy:** GUNA-LYMPHO (10 drops 3 times a day for 30-60 days)
- **P.N.E.I. remedy:** GUNA-MOOD (10 drops 3 times a day for 30-60 days)

Gingival Abscesses

- **Specific remedies:** GUNA-THROAT SPRAY (1 squirt 3-6 times a day on the affected area. In the acute phase 1 squirt every 30 minutes for 30 days) + GUNA-FLAM (10 drops every 15 minutes in the acute phase; continue with 10 drops 3 times a day for 30 days)
- **Drainage remedy:** GUNA-LYMPHO (10 drops 3 times a day for 30 days)
- **P.N.E.I. remedy:** CITOMIX (10 pellets twice a day for 2-3 days; continue with 3 pellets 3 times a day for 30 days)

Gingivitis

- **Specific remedy:** GUNA-THROAT SPRAY (1 squirt 3-6 times a day on the affected area for 30 days. In the acute phase 1 squirt every 30 minutes)
- **Drainage remedy:** GUNA-LYMPHO (10 drops 3 times a day for 30 days)
- **P.N.E.I. remedy:** GUNA-FLAM (10 drops 3 times a day for 30 days)

Globus Hystericus

- **Specific remedies:** ANTI AGE STRESS (3 pellets every 15 minutes in the acute phase; continue with 3 pellets 3 times a day for 30-60 days)
- **Drainage remedy:** GUNA-BOWEL (10 drops 3 times a day for 30-60 days)
- **P.N.E.I. remedy:** GUNA-MOOD (10 drops 3 times a day for 30-60 days) with SEROTONINA D6* (10 drops 3 times a day for 30-60 days) + MELATONINA D6* (10 drops 3 times a day for 30-60 days)

Glossitis

- **Specific remedy:** GUNA THROAT SPRAY (1 squirt 3-6 times a day in the affected area for 30 days. In the acute phase 1 squirt every 30 minutes for 10 days)
- **Drainage remedy:** GUNA-LYMPHO (10 drops 3 times a day for 30 days)
- **P.N.E.I. remedy:** CITOMIX (10 pellets twice a day for 2-3 days; continue with 3 pellets 3 times a day for 30 days)

Glucose Intolerance

- **Specific remedies:** GUNA-ADDICT 1 (40 drops 4 times a day for 60 days) + ARD COLOSTRUM (2 chewable tablets a day for 15 days)
- **Drainage remedy:** GUNA-LIVER (10 drops 3 times a day for 30-60 days)
- **P.N.E.I. remedy:** EUBIOFLOR (10 drops 3 times a day for 30-60 days)

Gonorrhea

- **Specific remedies:** NATUR 1* (1 ovule morning and evening for the first 15 days. Continue with 1 ovule in the evening for 45 days) + MYCOX (10 drops 3 times a day for the first 30 days. Continue with 10 drops 3 times a day for other 30 days)
- **Drainage remedy:** GUNA-LYMPHO (10 drops 3 times a day for 30-60 days)
- **P.N.E.I. remedy:** CITOMIX (3 pellets 3 times a day for 30-60 days)

H

Hay Fever

(allergic rhinitis)

- **Specific remedies:** GUNA-RHINO NOSE SPRAY (2 squirts in each nostril, 4-5 times a day over extended periods of time. In acute cases, 2 squirts in each nostril every 30 minutes for 2-3 hours)+ GUNA-ALLERGY TREAT (10 drops 3 times a day for 30-60 days. In the acute phase: 10 drops every 15-30 minutes for 2-3 hours)
- **Drainage remedy:** GUNA-LYMPHO (10 drops 3 times a day for 30-60 days)
- **P.N.E.I. remedy:** CITOMIX (10 pellets twice a day for 2-3 days; continue with 3 pellets 3 times a day for 30-60 days)

Headache

- **Specific remedies:** GUNA-FLAM (10 drops every 15 minutes in the acute phase; continue with 10 drops 3 times a day for 30-60 days) + GUNA-NEURAL

* Not yet available in the U.S.A.

- **Drainage remedy:** GUNA-LYMPHO (10 drops 3 times a day for 30-60 days)
- **P.N.E.I. remedy:** GUNA-FEM (10 drops 3 times a day for 30-60 days)/GUNA-MALE (10 drops 3 times a day for 30-60 days)

Heel Spur

See Calcaneal spur.

Helminthiasis (Parasitic Infection)

- **Specific remedy:** CITOMIX (10 pellets twice a day for 2-3 days; continue with 3 pellets 3 times a day for 30-60 days)
- **Drainage remedy:** GUNA-BOWEL (10 drops 3 times a day for 30 days)
- **P.N.E.I. remedy:** IL 5 4CH* (10 drops 3 times a day for 30 days)

Hematomas

- **Specific remedy:** GUNA-TRAUMA (10 drops every 15 minutes in the acute phase; continue with 10 drops 3 times a day for 30 days) + TAMANU ARNICA (apply a thin coat of cream on the affected area 2-3 times a day).
- **Drainage remedy:** GUNA-LYMPHO (10 drops 3 times a day for 30 days)
- **P.N.E.I. remedy:** GUNA-FLAM (10 drops every 15 minutes in the acute phase; continue with 10 drops 3 times a day for 30 days)

Hemorrhoids

- **Specific remedy:** GUNA-HEMORROIDS (10 drops every 15 minutes in the acute phase; continue with 10 drops 3 times a day for 30 days)
- **Drainage remedies:** GUNA-LYMPHO (10 drops 3 times a day for 30 days)+ GUNA-LIVER (3-5 pellets 3 times a day for 30-60 days)
- **P.N.E.I. remedy:** ANTI AGE STRESS (3 pellets 3 times a day for 30 days)

Hepatitis

- **Specific remedy:** GUNA-LIVER (3-5 pellets 3 times a day for 30-60 days)
- **Drainage remedies:** GUNA-KIDNEY (10 drops 3 times a day for 30-60 days) + GUNA-CELL (10 drops 3 times a day for 30-60 days)
- **P.N.E.I. remedy:** CITOMIX (10 pellets twice a day for 2-3 days; continue with 3 pellets 3 times a day for 30-60 days)

Hepatitis (chronic)

- **Specific remedy:** GUNA-KIDNEY (10 drops 3 times a day for 30-60 days)
- **Drainage remedy:** GUNA-CELL (10 drops 3 times a day for 30-60 days)
- **P.N.E.I. remedy:** CITOMIX (3 pellets 3 times a day for 30-60 days)

Herniated Intervertebral Disc (post surgical treatment)

Injectable therapy:

- **Specific remedies:** GUNA-LUMBAR + GUNA-ISCHIAL
 - Standard protocol for i.m. administration: 1-2 ampoules 1-3 times a week according to severity and progress.
 - Standard protocol according to mesotherapeutic technique using 1-2 ampoules per treatment: 2 treatments per week for the first 2 weeks, then 1 treatment a week until pain relief (average 8-10 sessions). For chronic pathologies: continue with 1 treatment a week for 1 month until pain relief, then 1 treatment a month.

For further information and for the specific infiltration points see: www.gunainc.com - Products - All Products - Injectables for Pain Management of the Guna Brochure "Pain Management"

Oral therapy

- **Specific remedy:** GUNA-TRAUMA (10 drops 3 times a day for 30-60 days)
- **Drainage remedies:** GUNA-MATRIX + GUNA-LYMPHO (10 drops each 3 times a day for 30-60 days)
- **P.N.E.I. remedy:** GUNA-ARTHRO (10 drops 3 times a day for 30-60 days)

Herpes Simplex

- **Specific remedies:** GUNA- TF HERPES (1 capsule a day Monday to Friday for 60-90 days) + TAMANU ARNICA (apply a thin coat of cream on the affected areas 2-3 times a day until remission of the skin lesions)
- **Drainage remedy:** GUNA-LYMPHO (10 drops 3 times a day for 30-60 days)
- **P.N.E.I. remedy:** CITOMIX (10 pellets twice a day for 2-3 days; continue with 3 pellets 3 times a day for 30-60 days)

Herpes Zoster (Shingles)

- **Specific remedy:** TAMANU ARNICA (apply a thin coat of cream on the affected areas 2-3 times a day in the acute phase)
- **Drainage remedies:** GUNA-LYMPHO (10 drops 3 times a day for 30-60 days)+ GUNA-CELL (10 drops 3 times a day for 30-60 days)

- **P.N.E.I. remedy:** CITOMIX (10 pellets twice a day for 2-3 days; continue with 3 pellets 3 times a day for 60 days) or GUNA-VIRUS (3 pellets 3 times a day for 30-60 days)

Herpes Zoster (Post Herpetic Neuritis)

Injectable therapy

- **Specific remedy:** GUNA-NEURAL
 - Standard protocol for i.m. administration: 1 ampoule 1-3 times a week according to severity and progress.
 - Standard protocol according to mesotherapeutic technique using 1 ampoule per treatment: 2 treatments per week for the first 2 weeks, then 1 treatment a week until pain relief (average 8-10 sessions). For chronic pathologies: continue with 1 treatment a week for 1 month until pain relief, then 1 treatment a month.

For further information and for the specific infiltration points see: www.gunainc.com - Products - All Products - Injectables for Pain Management and the Guna Brochure "Pain Management"

Oral therapy

- **Specific remedy:** GUNA-FLAM (10 drops every 15 minutes in the acute phase; continue with 10 drops 3 times a day for 30-60 days)
- **Drainage remedies:** GUNA-MATRIX (10 drops 3 times a day for 30-60 days) + GUNA-LYMPHO (10 drops 3 times a day for 30-60 days)
- **P.N.E.I. remedy:** ANTI AGE STRESS (3 pellets 3 times a day for 30-60 days)

Hip Osteoarthritis

See Osteoarthritis of the hip

Hoarseness

See Laryngitis.

Hyperacidity

- **Specific remedy:** GUNA-STOMACH (10 drops every 15-30 minutes in the acute phase; continue with 10 drops 3 times a day for 30-60 days)
- **Drainage remedy:** GUNA-MATRIX (10 drops 3 times a day for 30-60 days)
- **P.N.E.I. remedy:** ANTI AGE STRESS (3 pellets 3 times a day for 30-60 days)

Hyperlipidemia

See Dyslipidemia.

Hypertension (HBP)

- **Specific remedy:** IPER G* (10 drops 2-3 times a day for 30-60 days)
- **Drainage remedy:** GUNA-DIUR (15-20 drops 3 times a day for 30-60 days)
- **P.N.E.I. remedy:** GUNA-FEM (10 drops 3 times a day for 30-60 days)/GUNA-MALE (10 drops 3 times a day for 30-60 days)

Hypochondriasis

See Depression

Hypoglycemia

- **Specific remedy:** METATOX 3* (40 drops before meals for 30-60 days)
- **Drainage remedy:** GUNA-CELL (10 drops 3 times a day for 30-60 days)
- **P.N.E.I. remedy:** GUNA-FEM (10 drops 3 times a day for 30-60 days)/GUNA-MALE (10 drops 3 times a day for 30-60 days)

Hypomenorrhea

- **Specific remedy:** BETA ESTRADIOLO D6* (20 drops twice a day for 30-60 days) + PROGESTERONE D6* (20 drops twice a day for 30-60 days)
- **Drainage remedy:** GUNA-CELL (10 drops 3 times a day for 30-60 days)
- **P.N.E.I. remedy:** GUNA-FEM (10 drops 3 times a day for 30-60 days)

Hypoplasia (Breast)

Injectable therapy:

- **Specific remedy:** OMEOFORMULA 4 - Breast
 - Standard protocol for i.m. administration: 1 ampoule 1-3 times a week according to severity and progress.
 - Standard protocol according to mesotherapeutic technique using 1 or more ampoules per treatment: 1 treatment a week (average 8-10 sessions). For a persisting and lasting results also a maintenance therapy is recommended; this should be delivered in "boosters" of 3-4 sessions once or twice a year.

For further information see Guna Brochure "Omeoformula"

Oral therapy:

- **Specific remedy:** NATUR 3* (apply a thin coat of cream on the breasts twice a day for long periods)

* Not yet available in the U.S.A.

- **Drainage remedy:** GUNA-CELL (10 drops 3 times a day for 30-60 days)
- **P.N.E.I. remedies:** GUNA-FEM (10 drops 3 times a day for 30-60 days) + BETA ESTRADILOLO D6* (20 drops twice a day for 30-60 days)

Hypotension (LBP)

See Hypotonia.

Hypotonia

- **Specific remedies:** METATOX 3* (40 drops 2-3 times a day for 30-60 days)+ TONICO GUNA* (20 ml a day for 15-30 days)
- **Drainage remedies:** GUNA-CELL (10 drops 3 times a day for 30-60 days) + TONICO GUNA* (20 ml a day for 15-30 days)
- **P.N.E.I. remedies:** MELATONINA 4CH* (20 drops twice a day for 60 days) + ACTH D6* (20 drops twice a day for 30-60 days)

Ileitis and colitis

See Crohn's Disease

Immune Deficiency

- **Specific remedy:** CITOMIX (3 pellets 3 times a day for 30-60 days)
- **Drainage remedy:** GUNA-CELL (10 drops 3 times a day for 30-60 days)
- **P.N.E.I. remedy:** GUNA-FEM (10 drops 3 times a day for 30-60 days)/GUNA-MALE (10 drops 3 times a day for 30-60 days)

Impetigo

- **Specific remedies:** GUNA-DERMO (10 drops 3 times a day for 30-60 days) +TAMANU ARNICA (on average 2 applications a day)
- **Drainage remedy:** GUNA-LIVER (3-5 pellets 3 times a day for 30-60 days)
- **P.N.E.I. remedy:** CITOMIX (3 pellets morning and evening for 30-60 days)

Impotence (male)

- **Specific remedies:** OMEO STER* (3 pellets 3 times a day for 30-60 days) + ANTI AGE STRESS (3 pellets twice a day for 30-60 days)
- **Drainage remedy:** GUNA-CELL (10 drops 3 times a day for 30-60 days)
- **P.N.E.I. remedy:** GUNA-MALE (10 drops 3 times a day for 30-60 days)

Indigestion

See Constipation, Abdominal bloating, Colitis, Hemorrhoids.

Infection

- **Specific remedies:** GUNA-VIRUS -viral infections - (3 pellets every 15 minutes in the acute phase; continue with 3 pellets 3 times a day for 15 days) + GUNA-REACT -bacterial infections - (3 pellets every 15 minutes in the acute phase; continue with 3 pellets 3 times a day for 15 days)
- **Drainage remedy:** GUNA-LYMPHO (10 drops 3 times a day for 30-60 days)
- **P.N.E.I. remedy:** CITOMIX -in acute cases - (10 pellets twice a day for 2-3 days; continue with 3 pellets 3 times a day for 15 days); -in chronic cases - (3 pellets 3 times a day for 30-60 days)

Infection, chronic, recurrent

- **Specific remedy:** CITOMIX (3 pellets 3 times a day for 30-60 days)
- **Drainage remedy:** GUNA-LYMPHO (10 drops 3 times a day for 30-60 days)
- **P.N.E.I. remedy:** GUNA-FEM (10 drops 3 times a day for 30-60 days)/GUNA-MALE (10 drops 3 times a day for 30-60 days)

Infertility

- **Specific remedies:** GUNA-FEM (10 drops 3 times a day for 30-60 days) with FSH D6* (20 drops twice a day on days 1-3 of the cycle)+ LH D6* (20 drops twice a days 4-15 of the cycle)+ BETA ESTRADILOLO D6* (20 drops twice a days 4-14 of the cycle)+ PROGESTERONE D6* (20 drops twice a days 14-24 of the cycle)
- **Drainage remedies:** GUNA-MATRIX (10 drops 3 times a day for 30-60 days) + GUNA-CELL (10 drops 3 times a day for 30-60 days)
- **P.N.E.I. remedy:** ANTI AGE STRESS (3 pellets 3 times a day for 30-60 days)

Inflammation

See under the individual indications (Conjunctivitis, Rhinitis, Gastritis, etc.).

* Not yet available in the U.S.A.

Influenza

- **Specific remedy:** in acute phase: GUNA-FLU (1 tube every 6 hours in the acute phase). In prevention: GUNA-FLU (1 tube a week for 6 weeks)
- **Drainage remedy:** GUNA-COUGH (one 10 ml dose 3 to 6 times a day for 10 days. Paediatric dosage: one 5 ml dose 3 to 6 times a day for 10 days)
- **P.N.E.I. remedy:** in acute phase: CITOMIX (10 pellets twice a day for 2-3 days; continue with 3 pellets 3 times a day for 10 days). In prevention: CITOMIX (3 pellets 3 times a day for 10 days)

Insomnia

- **Specific remedy:** GUNA-SLEEP (20 drops 30 minutes before bedtime. In chronic cases, 10 drops every 30 minutes starting starting 30 min. before bedtime. It is advisable to take the remedy over extended periods of time to achieve physiological rebalancing of the homeostatic mechanism)
- **Drainage remedy:** GUNA-BOWEL (10 drops 3 times a day for 30-60 days)
- **P.N.E.I. remedies:** GUNA-FEM (10 drops 3 times a day for 30-60 days)/GUNA-MALE (10 drops 3 times a day for 30-60 days) + MELATONINA 4CH* (20 drops twice a day for 30-60 days)

Intercostal Neuralgia

Injectable therapy

- **Specific remedies:** GUNA-NEURAL + GUNA-THORACIC
 - Standard protocol for i.m. administration: 1-2 ampoules 1-3 times a week according to severity and progress.
 - Standard protocol according to mesotherapeutic technique using 1-2 ampoules per treatment: 2 treatments per week for the first 2 weeks, 1 then treatment a week until pain relief (average 8-10 sessions). For chronic pathologies: continue with 1 treatment a week for 1 month until pain relief, then 1 treatment a month.

For further information and for the specific infiltration points see: www.gunainc.com - Products - All Products - Injectables for Pain Management and the Guna Brochure "Pain Management"

Oral therapy

- **Specific remedy:** GUNA-FLAM (10 drops every 15 minutes in the acute phase; continue with 10 drops 3 times a day for 30 days)
- **Drainage remedies:** GUNA-MATRIX (10 drops 3 times a day for 30-60 days) + GUNA-LYMPHO (10 drops 3 times a day for 30-60 days)
- **P.N.E.I. remedy:** ANTI AGE STRESS (3 pellets twice a day for 30-60 days)

* Not yet available in the U.S.A.

Interdigital mycosis (Athlete's Foot)

- **Specific remedy:** MYCOX (20 drops 3 times a day in the first month, continue with 10 drops 3 times a day in the second month and longer)
- **Drainage remedy:** GUNA-LYMPHO (10 drops 3 times a day for 30-60 days)
- **P.N.E.I. remedy:** CITOMIX (3 pellets morning and evening for 30-60 days)

Intermenstrual Pain

- **Specific remedy:** GUNA-PMS (10 drops every 15-30 minutes for 2-3 hours in the acute phase; continue with 10 drops 3 times a day for 30-60 days)
- **Drainage remedy:** GUNA-LYMPHO (10 drops 3 times a day for 30-60 days)
- **P.N.E.I. remedies:** GUNA-FEM (10 drops 3 times a day for 30-60 days) + PROGESTERONE D6* (20 drops twice a day for 30-60 days)

Intermittent Claudicatio (Charcot's disease)

- **Specific remedy:** ARD VESSEL (1 vial a day orally for 10 days per month for several months) + ANTI AGE VEIN (3 pellets 3 times a day for 30-60 days)
- **Drainage remedies:** GUNA-MATRIX (10 drops 3 times a day for 30-60 days) + GUNA-LYMPHO (10 drops 3 times a day for 30-60 days)
- **P.N.E.I. remedy:** GUNA-FEM (10 drops 3 times a day for 30-60 days)/GUNA-MALE (10 drops 3 times a day for 30-60 days)

Intestinal Colic

- **Specific remedy:** GUNA-FLAM (10 drops every 15 minutes in the acute phase; continue with 10 drops 3 times a day for 15-30 days)
- **Drainage remedy:** GUNA-BOWEL (10 drops 3 times a day for 15-30 days)

Intestinal Spasms

See Intestinal colic.

Intestinal Stasis

- **Specific remedy:** GUNA-BOWEL (10 drops 3 times a day for 30-60 days)
- **Drainage remedy:** GUNA-LIVER (3-5 pellets 3 times a day for 30-60 days)

Iron Deficiency Anemia

See Anemia.

Irritable Bladder

- **Specific remedy:** ANTI AGE STRESS (3 pellets every 15 minutes in the acute phase; continue with 3 pellets twice a day for 30-60 days)
- **Drainage remedy:** GUNA-KIDNEY (10 drops 3 times a day for 30-60 days)
- **P.N.E.I. remedy:** GUNA-FEM (10 drops 3 times a day for 30-60 days)/GUNA-MALE (10 drops 3 times a day for 30-60 days)

Irritable Bowel Syndrome

- **Specific remedies:** ARD COLOSTRUM (2 chewable tablets a day for 15-30 days) and/or EUBIOFLOR (10 drops 3 times a day for 30-60 days)
- **Drainage remedy:** GUNA-BOWEL (10 drops 3 times a day for 30-60 days)
- **P.N.E.I. remedies:** GUNA-FEM (10 drops 3 times a day for 30-60 days)/GUNA-MALE (10 drops 3 times a day for 30-60 days) and ANTI AGE STRESS (3 pellets every 15 minutes in the acute phase; continue with 3 pellets twice a day for 30-60 days)

K

Knee Osteoarthritis

See Osteoarthritis of the knee

L

Laryngitis

- **Specific remedy:** GUNA-THROAT SPRAY (1 squirt on the affected areas at least 3 times a day. In the acute phase: 1 squirt every 15 minutes for 2 hours at most)
- **Drainage remedies:** GUNA-LYMPHO (10 drops 3 times a day for 30 days) and GUNA-COUGH (one 10 ml dose 3 to 6 times a day for 15 days).

Pediatric dosage: one 5 ml dose 3 to 6 times a day for 15 days)

- **P.N.E.I. remedies:** GUNA-VIRUS - acute- (3 pellets 3 times a day for 15-30 days); CITOMIX -chronic- (10 pellets twice a day for 2-3 days; continue with 3 pellets 3 times a day for 15-30 days)

Leucorrhea

- **Specific remedy:** NATUR 1* (1 ovule morning and evening for the first 15 days. Continue with one ovule in the evening for 45 days) + GUNA-TF CANDIDA (1 capsule a day Monday to Friday for 60-90 days)
- **Drainage remedy:** GUNA-LYMPHO (10 drops 3 times a day for 30-60 days)
- **P.N.E.I. remedy:** MYCOX (20 drops 3 times a day for the first 30 days. Continue with 10 drops 3 times a day for other 30-60 days)

Lipid Metabolism Dysfunction

See Dyslipidemia.

Liver Damage and Liver Cirrhosis

- **Specific remedy:** GUNA-LIVER (3-5 pellets 3 times a day for 30-60 days)
- **Drainage remedy:** GUNA-MATRIX (10 drops 3 times a day for 30-60 days) in association with GUNA-CELL (10 drops 3 times a day for 30-60 days)
- **P.N.E.I. remedy:** GUNA-FEM (10 drops 3 times a day for 30-60 days)/GUNA-MALE (10 drops 3 times a day for 30-60 days)

Liver Fibrosis

- **Specific remedy:** GUNA-LIVER (3-5 pellets 3 times a day for 30-60 days)
- **Drainage remedy:** GUNA-MATRIX (10 drops 3 times a day for 30-60 days)
- **P.N.E.I. remedy:** GUNA-FEM (10 drops 3 times a day for 30-60 days)/GUNA-MALE (10 drops 3 times a day for 30-60 days)

Liver Overload, functional

- **Specific remedy:** GUNA-LIVER (3-5 pellets 3 times a day for 30-60 days)
- **Drainage remedy:** GUNA-KIDNEY (10 drops 3 times a day for 30-60 days)
- **P.N.E.I. remedy:** GUNA-FEM (10 drops 3 times a day for 30-60 days)/GUNA-MALE (10 drops 3 times a day for 30-60 days)

Lumbago

See Back Pain (Lower)

* Not yet available in the U.S.A.

Lymphadenitis and Lymphangitis

- **Specific remedy:** GUNA-TONSILS (3 pellets every 15-30 minutes in the acute phase; continue with 3 pellets 3 times a day for 30-60 days)
- **Drainage remedy:** GUNA-LYMPHO (10 drops 3 times a day for 30-60 days)
- **P.N.E.I. remedy:** CITOMIX (10 pellets twice a day for 2-3 days; continue with 3 pellets 3 times a day for 30-60 days)

Lymphatism

- **Specific remedies:** GUNA-TONSILS (3 pellets 3 times a day for 30-60 days) + GUNA-LYMPHO (10 drops 3 times a day for 30-60 days)
- **Drainage remedy:** GUNA-BOWEL (10 drops 3 times a day for 30-60 days)
- **P.N.E.I. remedy:** CITOMIX (3 pellets 3 times a day for 30-60 days)

Lymphadenopathy

See Lymphatism.

Lymphoedema

- **Specific remedy:** GUNA-LYMPHO (10 drops 3 times a day for 30-60 days)
- **Drainage remedy:** GUNA-DIUR (10 drops 3 times a day for 30-60 days)
- **P.N.E.I. remedy:** GUNA-FLAM (10 drops 3 times a day for 30-60 days)

Lymph system insufficiency (Lymphatic Congestion)

- **Specific remedy:** GUNA-TONSILS (3 pellets 3 times a day for 30-60 days)
- **Drainage remedy:** GUNA-LYMPHO (10 drops 3 times a day for 30-60 days)
- **P.N.E.I. remedy:** CITOMIX (3 pellets morning and evening for 30-60 days)

M

Mastitis

- **Specific remedy:** NATUR 3* (apply a thin coat of cream on the breasts twice a day for 30 days)
- **Drainage remedy:** GUNA-LYMPHO (10 drops 3 times a day for 30-60 days)

* Not yet available in the U.S.A.

- **P.N.E.I. remedy:** GUNA-FLAM (10 drops 3 times a day for 30 days and longer)

Mastodynia (breast pain)

- **Specific remedy:** NATUR 3* (apply a thin coat of cream on the breasts twice a day over extended periods of time)
- **Drainage remedy:** GUNA-LYMPHO (10 drops 3 times a day for 30-60 days)
- **P.N.E.I. remedies:** GUNA-FEM (10 drops 3 times a day for 30-60 days) + PROGESTERONE D6* (20 drops twice a day for 30-60 days)

Melancholic Depression

See Depression.

Menière's Disease

- **Specific remedies:** GUNA-DIZZY + GUNA-NECK + GUNA-MUSCLE (10 drops 3 times a day for 30-60 days)
- **Drainage remedies:** GUNA-CELL (10 drops 3 times a day for 30-60 days) + GUNA-DIUR (15-20 drops 3 times a day for 30-60 days)
- **P.N.E.I. remedy:** GUNA-FEM (10 drops 3 times a day for 30-60 days)/GUNA-MALE (10 drops 3 times a day for 30-60 days)

Menopause

- **Specific remedies:** BETA ESTRADIOLO D6* (20 drops twice a day for 30-60 days) + MELATONINA 4CH* (20 drops twice a day for 30-60 days)
- **Drainage remedies:** GUNA-MATRIX (10 drops 3 times a day for 30-60 days) + GUNA-CELL (10 drops 3 times a day for 30-60 days)
- **P.N.E.I. remedy:** GUNA-FEM (10 drops 3 times a day for 30-60 days)

Metacarpal Pain

Injectable therapy

- **Specific remedies:** GUNA-HANDFOOT + GUNA-NEURAL
 - Standard protocol for i.m. administration: 1-2 ampoules 1-3 times a week according to severity and progress.
 - Standard protocol according to mesotherapeutic technique using 1-2 ampoules per treatment: 2 treatments per week for the first 2 weeks, then 1 treatment a week until pain relief (average 8-10 sessions). For chronic pathologies: continue with 1 treatment a week for 1 month until pain relief,

* Not yet available in the U.S.A.

then 1 treatment a month.

For further information and for the specific infiltration points see: www.gunainc.com - Products - All Products - Injectables for Pain Management and the Guna Brochure "Pain Management"

Oral therapy

- **Specific remedy:** GUNA-TRAUMA (10 drops every 15 minutes in the acute phase; continue with 10 drops 3 times a day for 30-60 days)
- **Drainage remedies:** GUNA-MATRIX (10 drops 3 times a day for 30-60 days) + GUNA-LYMPHO (10 drops 3 times a day for 30-60 days)
- **P.N.E.I. remedy:** GUNA-FLAM (10 drops 3 times a day for 30-60 days)

Metatarsal Pain

Injectable therapy

- **Specific remedies:** GUNA-HANDFOOT + GUNA-NEURAL
 - Standard protocol for i.m. administration: 1-2 ampoules 1-3 times a week according to severity and progress.
 - Standard protocol according to mesotherapeutic technique using 1-2 ampoules per treatment: 2 treatments per week for the first 2 weeks, then 1 treatment a week until pain relief (average 8-10 sessions). For chronic pathologies: continue with 1 treatment a week for 1 month until pain relief, then 1 treatment a month.

For further information and for the specific infiltration points see: www.gunainc.com - Products - All Products - Injectables for Pain Management Guna Brochure "Pain Management"

Oral therapy

- **Specific remedy:** GUNA-TRAUMA (10 drops every 15 minutes in the acute phase; continue with 10 drops 3 times a day for 30-60 days)
- **Drainage remedies:** GUNA-MATRIX (10 drops 3 times a day for 30-60 days) + GUNA-LYMPHO (10 drops 3 times a day for 30-60 days)
- **P.N.E.I. remedy:** GUNA-FLAM (10 drops 3 times a day for 30-60 days)

Microsporea (Protozoal Disease)

- **Specific remedies:** GUNA-DERMO (10 drops 3 times a day for 30-60 days) + MYCOX (20 drops 3 times a day for the first 30 days. Continue with 10 drops 3 times a day for other 30 days). It is also advisable to apply 3/5 drops in the interested part.
- **Drainage remedy:** GUNA-LYMPHO (10 drops 3 times a day for 30-60 days)
- **P.N.E.I. remedy:** CITOMIX (3 pellets morning and evening for 30-60 days)

Milk crust

- **Specific remedy:** GUNA-DERMO (3 drops 2 times a day for 30-60 days)
- **Drainage remedy:** GUNA-LIVER (3 drops 3 times a day for 30-60 days)
- **P.N.E.I. remedy:** ANTI-AGE SKIN (3 pellets twice a day for 30-60 days)

Morton's Neuroma

Injectable therapy

- **Specific remedies:** GUNA-NEURAL + GUNA-ISCHIAL
 - Standard protocol for i.m. administration: 1-2 ampoules 1-3 times a week according to severity and progress.
 - Standard protocol according to mesotherapeutic technique using 1-2 ampoules per treatment: 2 treatments per week for the first 2 weeks, then 1 treatment a week until pain relief (average 8-10 sessions). For chronic pathologies: continue with 1 treatment a week for 1 month until pain relief, then 1 treatment a month.

For further information and for the specific infiltration points see: www.gunainc.com - Products - All Products - Injectables for Pain Management and the Guna Brochure "Pain Management"

Oral therapy

- **Specific remedy:** GUNA-TRAUMA (10 drops every 15 minutes in the acute phase; continue with 10 drops 3 times a day for 30-60 days)
- **Drainage remedies:** GUNA-MATRIX (10 drops 3 times a day for 30-60 days) + GUNA-LYMPHO (10 drops 3 times a day for 30-60 days)
- **P.N.E.I. remedy:** GUNA-FLAM (10 drops 3 times a day for 30-60 days)

Motion Sickness

- **Specific remedy:** GUNA-DIZZY (10 drops every 15-30 minutes in the acute phase continue with 10 drops 3 times a day for 30-60 days)
- **Drainage remedy:** GUNA-CELL (10 drops 3 times a day for 30-60 days)
- **P.N.E.I. remedy:** GUNA-FEM (10 drops 3 times a day for 30-60 days)/GUNA-MALE (10 drops 3 times a day for 30-60 days)

Muscular Rheumatism

Injectable therapy

- **Specific remedies:** GUNA-MUSCLE + GUNA-NEURAL
 - Standard protocol for i.m. administration: 1-2 ampoules 1-3 times a week according to severity and progress.

- Standard protocol according to mesotherapeutic technique using 1-2 ampoules per treatment: 2 treatments per week for the first 2 weeks, then 1 treatment a week until pain relief (average 8-10 sessions). For chronic pathologies: continue with 1 treatment a week for 1 month until pain relief, then 1 treatment a month.

For further information and for the specific infiltration points see: www.gunainc.com - Products - All Products - Injectables for Pain Management and the Guna Brochure "Pain Management"

Oral therapy

- **Specific remedy:** GUNA-TRAUMA (10 drops every 15 minutes in the acute phase; continue with 10 drops 3 times a day for 30-60 days)
- **Drainage remedies:** GUNA-MATRIX (10 drops 3 times a day for 30-60 days) + GUNA-LYMPHO (10 drops 3 times a day for 30-60 days)
- **P.N.E.I. remedy:** GUNA-FLAM (10 drops 3 times a day for 30-60 days)

Mycosis

See Dermatomycosis, Interdigital Mycosis.

Myositis

Injectable therapy

- **Specific remedies:** GUNA-MUSCLE + GUNA-NEURAL
 - Standard protocol for i.m. administration: 1-2 ampoules 1-3 times a week according to severity and progress.
 - Standard protocol according to mesotherapeutic technique using 1-2 ampoules per treatment: 2 treatments per week for the first 2 weeks, then 1 treatment a week until pain relief (average 8-10 sessions). For chronic pathologies: continue with 1 treatment a week for 1 month until pain relief, then 1 treatment a month.

For further information and for the specific infiltration points see: www.gunainc.com - Products - All Products - Injectables for Pain Management and the Guna Brochure "Pain Management"

Oral therapy

- **Specific remedy:** GUNA-TRAUMA (10 drops every 15 minutes in the acute phase; continue with 10 drops 3 times a day for 30-60 days)
- **Drainage remedies:** GUNA-MATRIX (10 drops 3 times a day for 30-60 days) + GUNA-LYMPHO (10 drops 3 times a day for 30-60 days)
- **P.N.E.I. remedy:** GUNA-FLAM (10 drops 3 times a day for 30-60 days)

N

Nephrolithiasis

- **Specific remedy:** GUNA-KIDNEY (10 drops 3 times a day for 30-60 days)
- **Drainage remedy:** GUNA-LIVER (3-5 pellets 3 times a day for 30-60 days)
- **P.N.E.I. remedy:** GUNA-FLAM (10 drops 3 times a day for 30-60 days)

Neuralgia

Injectable therapy

- **Specific remedy:** GUNA-NEURAL
 - Standard protocol for i.m. administration: 1-2 ampoules 1-3 times a week according to severity and progress.
 - Standard protocol according to mesotherapeutic technique using 1-2 ampoules per treatment: 2 treatments per week for the first 2 weeks, then 1 treatment a week until pain relief (average 8-10 sessions). For chronic pathologies: continue with 1 treatment a week for 1 month until pain relief, then 1 treatment a month.

For further information and for the specific infiltration points see: www.gunainc.com - Products - All Products - Injectables for Pain Management and the Guna Brochure "Pain Management"

Oral therapy

- **Specific remedy:** GUNA-FLAM (10 drops every 15 minutes in the acute phase; continue with 10 drops 3 times a day for 30 days)
- **Drainage remedies:** GUNA-MATRIX (10 drops 3 times a day for 30-60 days) + GUNA-LYMPHO (10 drops 3 times a day for 30-60 days)
- **P.N.E.I. remedy:** ANTI AGE STRESS (3 pellets 3 times a day for 30-60 days)

Neurodermatitis

- **Specific remedies:** GUNA-DERMO (10 drops 3 times a day for 30-60 days) + TAMANU ARNICA (on average two applications a day)
- **Drainage remedy:** GUNA-MATRIX (10 drops 3 times a day for 30-60 days)
- **P.N.E.I. remedy:** ANTI AGE STRESS (3 pellets 3 times a day for 30-60 days)

Neurosis

- **Specific remedy:** GUNA-MOOD (10 drops 3 times a day for 30-60 days)
- **Drainage remedy:** GUNA-BOWEL (10 drops 3 times a day for 30-60 days)
- **P.N.E.I. remedies:** GUNA-FEM (10 drops 3 times a day for 30-60 days)/GUNA-MALE (10 drops 3 times a day for 30-60 days) + MELATONINA 4CH* (20 drops twice a day for 30-60 days)

Neurotic Depression

- **Specific remedy:** GUNA-MOOD(10 drops 3 times a day for 30-60 days)
- **Drainage remedy:** GUNA-BOWEL (10 drops 3 times a day for 30-60 days)
- **P.N.E.I. remedies:**GUNA-FEM (10 drops 3 times a day for 30-60 days)/GUNA-MALE (10 drops 3 times a day for 30-60 days) + MELATONINA 4CH* (20 drops twice a day for 30-60 days) + SEROTONINA D6* (20 drops twice a day for 30-60 days)



Obesity

Injectable therapy

- **Specific remedy:** OMEOFORMULA 1 - Adiposity
 - Standard protocol for i.m. administration: 1 ampoule 1-3 times a week according to severity and progress.
 - Standard protocol according to mesotherapeutic technique using 1 or more ampoules per treatment: 1 treatment a week (average 8-10 sessions). For persisting and lasting results, maintenance therapy is recommended; this should be delivered in "boosters" of 3-4 sessions once or twice a year.
- For further information see Guna Brochure "Omeoformula"

Oral therapy

- **Specific remedies:** ARD-CHOLESTEROL (2 tablets 30 minutes before main meals. Interrupt medication one day a week so as to support fat-soluble vitamins and unsaturated fatty acids absorption) + ANTI AGE SLIM* (3 pellets twice a day for 30-60 days)

- **Drainage remedy:** GUNA-DIUR (20-25 drops 3 times a day for 30-60 days) + GUNA-CELL (10 drops 3 times a day for 30-60 days)
- **P.N.E.I. remedy:** GUNA-FEM (10 drops 3 times a day for 30-60 days)/GUNA-MALE (10 drops 3 times a day for 30-60 days)

Onychomycosis

- **Specific remedy:** MYCOX (20 drops 3 times a day for the first 30 days. Continue with 10 drops 3 times a day for other 30 days)
- **Drainage remedy:** GUNA-LYMPHO (10 drops 3 times a day for 30-60 days)
- **P.N.E.I. remedy:** CITOMIX (3 pellets morning and evening for 30-60 days)

Oophoritis (Ovarian Inflammation, Pelvic Inflammatory Disease)

- **Specific remedy:** GUNA-FLAM (10 drops every 15 minutes in the acute phase; continue with 10 drops 3 times a day for 30 days)
- **Drainage remedy:** GUNA-LYMPHO (10 drops 3 times a day for 30-60 days)
- **P.N.E.I. remedy:** GUNA-FEM (10 drops 3 times a day for 30-60 days)

Orchitis

- **Specific remedies:** GUNA-FLAM (10 drops every 15 minutes in the acute phase; continue with 10 drops 3 times a day for 30-60 days) + CITOMIX (10 pellets twice a day for 2-3 days, continue with 3 pellets 3 times a day for 30-60 days)
- **Drainage remedy:** GUNA-LYMPHO (10 drops 3 times a day for 30-60 days)
- **P.N.E.I. remedy:** GUNA-MALE (10 drops 3 times a day for 30-60 days)

Organic Psychosis

Chronic forms of the psyche

- **Specific remedy:** GUNA-MOOD (10 drops 3 times a day for 30-60 days)
- **Drainage remedy:** GUNA-MATRIX (10 drops 3 times a day for 30-60 days)
- **P.N.E.I. remedies:** GUNA-FEM (10 drops 3 times a day for 30-60 days)/GUNA-MALE (10 drops 3 times a day for 30-60 days) + MELATONINA 4CH* (20 drops twice a day for 60 days) + SEROTONINA D6* (20 drop twice a day for 30-60 days)

Ostealgia

- **Specific remedy:** GUNA-TRAUMA (10 drops every 15 minutes in the acute phase; continue with 10 drops 3 times a day for 30-60 days)

* Not yet available in the U.S.A.

- **Drainage remedy:** GUNA-MATRIX (10 drops 3 times a day for 30-60 days)
- **P.N.E.I. remedy:** GUNA-FLAM (10 drops every 15 minutes in the acute phase; continue with 10 drops 3 times a day for 30-60 days)

Osteoarthritis

See also "Pain management Brochure"- www.gunainc.com - products - all products - injectables for Pain Management

Cervical

Injectable therapy:

- **Specific remedies:** GUNA-NECK + GUNA-MUSCLE + GUNA-NEURAL
 - Standard protocol for i.m. administration: 1-2 ampoules 1-3 times a week according to severity and progress.
 - Standard protocol according to mesotherapeutic technique using 1-2 ampoules per treatment: 2 treatments per week for the first 2 weeks, then 1 treatment a week until pain relief (average 8-10 sessions). For chronic pathologies: continue with 1 treatment a week for 1 month until pain relief, then 1 treatment a month.

For further information and for the specific infiltration points see: www.gunainc.com - Products - All Products - Injectables for Pain Management and the Guna Brochure "Pain Management"

Oral therapy

- **Specific remedy:** GUNA-ARTHRO (10 drops every 15 minutes in the acute phase; continue with 10 drops 3 times a day for 30-60 days)
- **Drainage remedies:** GUNA-MATRIX (10 drops 3 times a day for 30-60 days) + GUNA-LYMPHO (10 drops 3 times a day for 30-60 days)
- **P.N.E.I. remedy:** GUNA-FLAM (10 drops every 15 minutes in the acute phase; continue with 10 drops 3 times a day for 30-60 days)

Thoracic

Injectable therapy:

- **Specific remedies:** GUNA-THORACIC + GUNA-MUSCLE + GUNA-NEURAL
 - Standard protocol for i.m. administration: 1-2 ampoules 1-3 times a week according to severity and progress.
 - Standard protocol according to mesotherapeutic technique using 1-2 ampoules per treatment: 2 treatments per week for the first 2 weeks, then 1 treatment a week until pain relief (average 8-10 sessions). For chronic pathologies: continue with 1 treatment a week for 1 month until pain relief, then 1 treatment a month.

For further information and for the specific infiltration points see: www.gunainc.com - Products - All Products - Injectables for Pain Management

and the Guna Brochure "Pain Management"

Oral therapy

- **Specific remedy:** GUNA-ARTHRO (10 drops every 15 minutes in the acute phase; continue with 10 drops 3 times a day for 30-60 days)
- **Drainage remedies:** GUNA-MATRIX (10 drops 3 times a day for 30-60 days) + GUNA-LYMPHO (10 drops 3 times a day for 30-60 days)
- **P.N.E.I. remedy:** GUNA-FLAM (10 drops every 15 minutes in the acute phase; continue with 10 drops 3 times a day for 30-60 days)

Lumbar

Injectable therapy:

- **Specific remedies:** GUNA-LUMBAR + GUNA-MUSCLE + GUNA-NEURAL
 - Standard protocol for i.m. administration: 1-2 ampoules 1-3 times a week according to severity and progress.
 - Standard protocol according to mesotherapeutic technique using 1-2 ampoules per treatment: 2 treatments per week for the first 2 weeks, then 1 treatment a week until pain relief (average 8-10 sessions). For chronic pathologies: continue with 1 treatment a week for 1 month until pain relief, then 1 treatment a month.

For further information and for the specific infiltration points see: www.gunainc.com - Products - All Products - Injectables for Pain Management and the Guna Brochure "Pain Management"

Oral therapy

- **Specific remedy:** GUNA-ARTHRO (10 drops every 15 minutes in the acute phase; continue with 10 drops 3 times a day for 30-60 days)
- **Drainage remedies:** GUNA-MATRIX (10 drops 3 times a day for 30-60 days) + GUNA-LYMPHO (10 drops 3 times a day for 30-60 days)
- **P.N.E.I. remedy:** GUNA-FLAM (10 drops every 15 minutes in the acute phase; continue with 10 drops 3 times a day for 30-60 days)

Hip joint (coxo femoral)

Injectable therapy:

- **Specific remedies:** GUNA-HIP + GUNA-MUSCLE
 - Standard protocol for i.m. administration: 1-2 ampoules 1-3 times a week according to severity and progress.
 - Standard protocol according to mesotherapeutic technique using 1-2 ampoules per treatment: 2 treatments per week for the first 2 weeks, then 1 treatment a week until pain relief (average 8-10 sessions). For chronic pathologies: continue with 1 treatment a week for 1 month until pain relief, then 1 treatment a month.

For further information and for the specific infiltration points see:

www.gunainc.com - Products - All Products - Injectables for Pain Management and the Guna Brochure "Pain Management"

Oral therapy

- **Specific remedy:** GUNA-ARTHRO (10 drops every 15 minutes in the acute phase; continue with 10 drops 3 times a day for 30-60 days)
- **Drainage remedies:** GUNA-MATRIX (10 drops 3 times a day for 30-60 days) + GUNA-LYMPHO (10 drops 3 times a day for 30-60 days)
- **P.N.E.I. remedy:** GUNA-FLAM (10 drops every 15 minutes in the acute phase; continue with 10 drops 3 times a day for 30-60 days)

Knee

Injectable therapy:

- **Specific remedies:** GUNA-HIP + GUNA-MUSCLE
 - Standard protocol for i.m. administration: 1-2 ampoules 1-3 times a week according to severity and progress.
 - Standard protocol according to mesotherapeutic technique using 1-2 ampoules per treatment: 2 treatments per week for the first 2 weeks, then 1 treatment a week until pain relief (average 8-10 sessions). For chronic pathologies: continue with 1 treatment a week for 1 month until pain relief, then 1 treatment a month.

For further information and for the specific infiltration points see: www.gunainc.com - Products - All Products - Injectables for Pain Management and the Guna Brochure "Pain Management"

Oral therapy

- **Specific remedy:** GUNA-ARTHRO (10 drops every 15 minutes in the acute phase; continue with 10 drops 3 times a day for 30-60 days)
- **Drainage remedies:** GUNA-MATRIX (10 drops 3 times a day for 30-60 days) + GUNA-LYMPHO (10 drops 3 times a day for 30-60 days)
- **P.N.E.I. remedy:** GUNA-FLAM (10 drops every 15 minutes in the acute phase; continue with 10 drops 3 times a day for 30-60 days)

Hands-feet

Injectable therapy:

- **Specific remedies:** GUNA-HANDFOOT + GUNA-NEURAL
 - Standard protocol for i.m. administration: 1-2 ampoules 1-3 times a week according to severity and progress.
 - Standard protocol according to mesotherapeutic technique using 1-2 ampoules per treatment: 2 treatments per week for the first 2 weeks, then 1 treatment a week until pain relief (average 8-10 sessions). For chronic pathologies: continue with 1 treatment a week for 1 month until pain relief, then 1 treatment a month.

For further information and for the specific infiltration points see: www.gunainc.com - Products - All Products - Injectables for Pain Management and the Guna Brochure "Pain Management"

Oral therapy

- **Specific remedy:** GUNA-ARTHRO (10 drops every 15 minutes in the acute phase; continue with 10 drops 3 times a day for 30-60 days)
- **Drainage remedies:** GUNA-MATRIX (10 drops 3 times a day for 30-60 days) + GUNA-LYMPHO (10 drops 3 times a day for 30-60 days)
- **P.N.E.I. remedy:** GUNA-FLAM (10 drops every 15 minutes in the acute phase; continue with 10 drops 3 times a day for 30-60 days)

Osteoarthritis of the Hip

Injectable therapy

- **Specific remedies:** GUNA-HIP + GUNA-NEURAL + GUNA-POLYARTHROSIS or GUNA-MUSCLE
 - Standard protocol for i.m. administration: 1 ampoule 1-3 times a week according to severity and progress.
 - Standard protocol according to mesotherapeutic technique using 1 ampoule per treatment: 2 treatments per week for the first 2 weeks, then 1 treatment a week until pain relief (average 8-10 sessions). For chronic pathologies: continue with 1 treatment a week for 1 month until pain relief, then 1 treatment a month.

For further information and for the specific infiltration points see: www.gunainc.com - Products - All Products - Injectables for Pain Management and the Guna Brochure "Pain Management"

Oral therapy

- **Specific remedy:** GUNA-TRAUMA (10 drops every 15 minutes in the acute symptomatology; continue with 10 drops 3 times a day for 30-60 days)
- **Drainage remedies:** GUNA-MATRIX (10 drops 3 times a day for 30-60 days) + GUNA-LYMPHO (10 drops 3 times a day for 30-60 days)
- **P.N.E.I. remedy:** GUNA-FLAM (10 drops 3 times a day for 30-60 days)

Osteoarthritis of the knee

Injectable therapy

- **Specific remedies:** GUNA-HIP + GUNA-MUSCLE
 - Standard protocol for i.m. administration: 1-2 ampoules 1-3 times a week according to severity and progress.
 - Standard protocol according to mesotherapeutic technique using 1-2

ampoules per treatment: 2 treatments per week for the first 2 weeks, then 1 treatment a week until pain relief (average 8-10 sessions). For chronic pathologies: continue with 1 treatment a week for 1 month until pain relief, then 1 treatment a month.

For further information and for the specific infiltration points see: www.gunainc.com - Products - All Products - Injectables for Pain Management and the Guna Brochure "Pain Management"

Oral therapy

- **Specific remedy:** GUNA-ARTHRO (10 drops 3 times a day for 30-60 days)
- **Drainage remedy:** GUNA-LYMPHO (10 drops 3 times a day for 30-60 days)
- **P.N.E.I. remedy:** GUNA-FLAM (10 drops every 15 minutes in the acute phase; continue with 10 drops 3 times a day for 30 days)

Osteochondrosis

See Apophysitis.

Osteophytes (heels)

See Calcaneal Spur.

Osteoporosis

- **Specific remedy:** OSTEObIOS (10 drops 3 times a day for 30-60 days)
- **Drainage remedies:** GUNA-MATRIX (10 drops 3 times a day for 30-60 days) + GUNA-CELL (10 drops 3 times a day for 30-60 days)
- **P.N.E.I. remedy:** GUNA-FEM (10 drops 3 times a day for 30-60 days)

Otitis Media, Acute

- **Specific remedy:** GUNA-FLAM (10 drops every 15 minutes in the acute phase; continue with 10 drops 3 times a day for 15-30 days)
- **Drainage remedy:** GUNA-LYMPHO (10 drops 3 times a day for 15-30 days and longer)
- **P.N.E.I. remedy:** CITOMIX (10 pellets twice a day for 2-3 days; continue with 3 pellets 3 times a day for 15-30 days)

Otorrhea

See Otitis media.

Ovaritis

See Oophoritis.

P

Pain

See also (in Guna Therapeutic Index): Ankylosing Spondylitis, Arthritis symptoms of, Osteoarthritis (cervical, thoracic, lumbar, hip joint, knee, hands-feet), Auto Immune Diseases, Back pain (lower), Carpal-tunnel Syndrome, Cervicogenic Headache, Cervicobrachial Syndrome, Reflex Sympathetic Dystrophy, Whiplash, Herniated Disc, Epicondylitis, Fybromialgia, Osteoarthritis of the hip, Intercostal Neuralgia, Metacarpal pain, Metatarsal pain, Morton's Neuroma, Muscular Rheumatism, Neuralgia, Periarthritis humeroscapular/Frozen Sholder, Polyarthritis, Rheumatoid Arthritis, Sciatica, Shoulder-Hand Syndrome, Spondylosis, Tennis Elbow, Torticollis, Trigeminal Neuralgia, Trigger Point Therapy

See also "Pain Management Brochure"

- **Specific remedy:** GUNA-FLAM (10 drops every 15 minutes in the acute phase; continue with 10 drops 3 times a day for 30 days)
- **Drainage remedy:** GUNA-LYMPHO (10 drops 3 times a day for 30-60 days)
- **P.N.E.I. remedy:** ANTI AGE STRESS (3 pellets 3 times a day for 30-60 days)

Parametritis

See Oophoritis

Periarthritis calcaria

(Myositis Ossificans)

- **Specific remedy:** M47* (15 drops twice a day for 30-60 days)
- **Drainage remedy:** GUNA-MATRIX (10 drops 3 times a day for 30-60 days)
- **P.N.E.I. remedy:** GUNA-FLAM (10 drops 3 times a day for 30-60 days)

Periarthritis, Humeroscapular (Frozen Shoulder)

Injectable therapy

- **Specific remedies:** GUNA-SHOULDER + GUNA-POLYARTHRITIS and/or GUNA-MUSCLE
 - Standard protocol for i.m. administration: 1-2 ampoules 1-3 times a week according to severity and progress.
 - Standard protocol according to mesotherapeutic technique using 1-2 ampoules per treatment: 2 treatments per week for the first 2 weeks, then

* Not yet available in the U.S.A.

1 treatment a week until pain relief (average 8-10 sessions). For chronic pathologies: continue 1 treatment a week for 1 month until pain relief, then 1 treatment a month.

For further information and for the specific infiltration points see: www.gunainc.com - Products - All Products - Injectables for Pain Management and the Guna Brochure "Pain Management"

Oral therapy

- **Specific remedy:** GUNA-TRAUMA (10 drops every 15 minutes in the acute phase; continue with 10 drops 3 times a day for 30-60 days)
- **Drainage remedies:** GUNA-MATRIX (10 drops 3 times a day for 30-60 days) + GUNA-LYMPHO (10 drops 3 times a day for 30-60 days)
- **P.N.E.I. remedy:** GUNA-FLAM (10 drops 3 times a day for 30-60 days)

Peripheral Vascular Disease

- **Specific remedies:** ANTI AGE VEIN (3 pellets twice 3 times a day for 60 days) + ARD VESSEL (1 vial a day orally for 10 days per months for several months)
- **Drainage remedy:** GUNA-LYMPHO (10 drops 3 times a day for 30-60 days)
- **P.N.E.I. remedy:** GUNA-FEM (10 drops 3 times a day for 30-60 days)/GUNA-MALE (10 drops 3 times a day for 30-60 days)

Pertussis (Whooping Cough)

- **Specific remedy:** GUNA-COUGH (one 10 ml dose 3 to 6 times a day for 3 times a day for 30 days. Pediatric dosage: one 5 ml dose 3 to 6 times a day for 30 days)
- **Drainage remedy:** GUNA-BOWEL (10 drops 3 times a day for 30-60 days)
- **P.N.E.I. remedy:** CITOMIX (10 pellets twice a day for 2-3 days; continue with 3 pellets 3 times a day for 60 days)

Pharyngitis

- **Specific remedy:** GUNA-FLAM (10-20 drops every 2-3 hours in the acute phase. Children: half dose. Continue with 10 drops 3 times a day for 30 days)
- **Drainage remedy:** GUNA-COUGH (one 10 ml dose 3 to 6 times a day for 30 days. Pediatric dosage: one 5 ml dose 3 to 6 times a day for 3 times a day for 30 days)
- **P.N.E.I. remedy:** CITOMIX (10 pellets twice a day for 2-3 days; continue with 3 pellets 3 times a day for 30 days)

Phlebitis

See Thrombophlebitis.

Phobias

- **Specific remedy:** ANTI AGE STRESS (3 pellets every 15 minutes in the acute phase; continue with 3 pellets twice a day for 60 days)
- **Drainage remedy:** GUNA-KIDNEY (10 drops 3 times a day for 30-60 days)
- **P.N.E.I. remedies:** GUNA-MOOD (10 drops 3 times a day for 30-60 days) + MELATONINA 4CH* (20 drops twice a day for 30-60 days)

Polyarthritis

Injectable therapy

- **Specific remedies:** GUNA-POLYARTHRITIS + GUNA-HANDFOOT or GUNA-NEURAL or GUNA-MUSCLE
 - Standard protocol for i.m. administration: 1-2 ampoules 1-3 times a week according to severity and progress.
 - Standard protocol according to mesotherapeutic technique using 1-2 ampoules per treatment: 2 treatments per week for the first 2 weeks, then 1 treatment a week until pain relief (average 8-10 sessions). For chronic pathologies: continue with 1 treatment a week for 1 month until pain relief, then 1 treatment a month.

For further information and for the specific infiltration points see: www.gunainc.com - Products - All Products - Injectables for Pain Management and the Guna Brochure "Pain Management"

Oral therapy

- **Specific remedy:** GUNA-TRAUMA (10 drops every 15 minutes in the acute phase; continue with 10 drops 3 times a day for 30-60 days)
- **Drainage remedies:** GUNA-MATRIX (10 drops 3 times a day for 30-60 days) + GUNA-LYMPHO (10 drops 3 times a day for 30-60 days)
- **P.N.E.I. remedy:** GUNA-FLAM (10 drops 3 times a day for 30-60 days)

Polyarthritis, symptomatic treatment

Injectable therapy:

- **Specific remedy:** GUNA-POLYARTHRITIS
 - Standard protocol for i.m. administration: 1-2 ampoules 1-3 times a week according to severity and progress.
 - Standard protocol according to mesotherapeutic technique using 1-2 ampoules per treatment: 2 treatments per weeks in the first 2 weeks, then

* Not yet available in the U.S.A.

1 treatment a week until pain relief (average 8-10 sessions). For chronic pathologies: continue with 1 treatment a week for 1 month until pain relief, then 1 treatment a month.

For further information and for the specific infiltration points see: www.gunainc.com - Products - All Products - Injectables for Pain Management and the Guna Brochure "Pain Management"

Oral therapy

- **Specific remedy:** GUNA-FLAM (10 drops every 15 minutes in the acute phase; continue with 10 drops 3 times a day for 30-60 days)
- **Drainage remedy:** GUNA-LYMPHO (10 drops 3 times a day for 30-60 days)
- **P.N.E.I. remedy:** GUNA-TRAUMA (10 drops 3 times a day for 30-60 days)

Premenstrual syndrome (PMS)

- **Specific remedy:** GUNA-PMS (10 drops every 15-30 minutes for the first 2 hours; continue with 10 drops 3 times a day for 30-60 days)
- **Drainage remedy:** GUNA-LYMPHO (10 drops 3 times a day starting from the 14th day of of the cycle for several menstrual cycles)
- **P.N.E.I. remedies:** GUNA-FEM (10 drops 3 times a day for 30-60 days) and/or GUNA-MOOD (10 drops 3 times a day for 30-60 days)

Pressure Ulcers (bed sores)

- **Specific remedy:** TAMANU-ARNICA (apply a thin coat on the affected areas several times a day)
- **Drainage remedy:** GUNA-LYMPHO (10 drops 3 times a day for 30-60 days)+ ANTI AGE VEIN (3 pellets 3 times a day for 30-60 days)
- **P.N.E.I. remedy:** GUNA-FEM (10 drops 3 times a day for 30-60 days)/GUNA-MALE (10 drops 3 times a day for 30-60 days)

Prostatitis

- **Specific remedies:** CITOMIX (10 pellets twice a day for 2-3 days; continue with 3 pellets 3 times a day for 30-60 days)+ GUNA-FLAM (10 drops 3 times a day for 30-60 days)
- **Drainage remedy:** GUNA-LYMPHO (10 drops 3 times a day for 30-60 days)
- **P.N.E.I. remedy:** GUNA-MALE (10 drops 3 times a day for 30-60 days)

Psoriasis

- **Specific remedies:** GUNA-DERMO (10 drops 3 times a day for 30-60 days)

TAMANU ARNICA (on average 2 applications a day)

- **Drainage remedies:** GUNA-CELL (10 drops 3 times a day for 30-60 days)+ GUNA-LIVER (3-5 pellets 3 times a day for 30-60 days)
- **P.N.E.I. remedy:** GUNA-MOOD (10 drops 3 times a day for 30-60 days)

R

Reactive Depressive Syndrome

- **Specific remedy:** GUNA-MOOD (10 drops 3 times a day for 30-60 days)
- **Drainage remedy:** GUNA-BOWEL (10 drops 3 times a day for 30-60 days)
- **P.N.E.I. remedies:** GUNA-FEM (10 drops 3 times a day for 30-60 days)/GUNA-MALE (10 drops 3 times a day for 30-60 days) and MELATONINA 4CH* (20 drops twice a day for 30-60 days) + SEROTONINA D6* (20 drops twice a day for 30-60 days)

Reflex Sympathetic Dystrophy (RSD)

For the parenteral therapy see: www.gunainc.com - Products - All Products - Injectables for Pain Management and the Guna Brochure "Pain Management"

- **Specific remedy:** GUNA-TRAUMA (10 drops every 15 minutes in the acute phase; continue with 10 drops 3 times a day for 30-60 days)
- **Drainage remedy:** GUNA-MATRIX (10 drops 3 times a day for 30-60 days)
- **P.N.E.I. remedies:** GUNA-FLAM (10 drops 3 times a day for 30-60 days) + ANTI-AGE STRESS (3 pellets 3 times a day for 30-60 days)

Restless Legs Syndrome

- **Specific remedy:** ANTI AGE STRESS (3 pellets every 15 minutes in the acute phase; continue with 3 pellets twice a day for 60 days)
- **P.N.E.I. remedies:** GUNA-MOOD (10 drops 3 times a day for 30-60 days) and SEROTONINA D6* (20 drops twice a day for 30-60 days)

Rhagades

- **Specific remedy:** TAMANU ARNICA (on average 2 applications a day for

15-30 days)

- **Drainage remedy:** ANTI AGE SKIN (3 pellets twice a day for 30 days)
- **P.N.E.I. remedy:** ANTI AGE STRESS (3 pellets twice a day for 30 days)

Rheumatoid arthritis

Injectable therapy

- **Specific remedies:** GUNA-POLYARTHRITIS + GUNA-NEURAL
 - Standard protocol for i.m. administration: 1-2 ampoules 1-3 times a week according to severity and progress.
 - Standard protocol according to mesotherapeutic technique using 1-2 ampoules per treatment: 2 treatments per week for the first 2 weeks, then 1 treatment a week until pain relief (average 8-10 sessions). For chronic pathologies: continue with 1 treatment a week for 1 month until pain relief, then 1 treatment a month.

For further information and for the specific infiltration points see: www.gunainc.com - Products - All Products - Injectables for Pain Management and the Guna Brochure "Pain Management"

Oral therapy

- **Specific remedy:** GUNA-TRAUMA (10 drops every 15 minutes in the acute phase; continue with 10 drops 3 times a day for 30-60 days)
- **Drainage remedies:** GUNA-MATRIX (10 drops 3 times a day for 30-60 days) + GUNA-LYMPHO (10 drops 3 times a day for 30-60 days)
- **P.N.E.I. remedy:** GUNA-FLAM (10 drops 3 times a day for 30-60 days)

Rhinitis, Acute

- **Specific remedy:** GUNA-RHINO NOSE SPRAY (2 squirts in each nostril, 4-5 times a day over extended periods of time. In acute cases, 2 squirts in each nostril every 30 minutes for 2-3 hours)
- **Drainage remedy:** GUNA-LYMPHO (10 drops 3 times a day for 30-60 days)
- **P.N.E.I. remedy:** GUNA-FLU (1 tube every 6 hours in the acute phase) or CITOMIX (10 pellets twice a day for 2-3 days; continue with 3 pellets 3 times a day for 15 days)

Rhinitis, Allergic

See Hay fever.

Ringworm of the nails

See Dermatomycosis

Rosacea

See Acne rosacea.

S

Sacro-Iliac Syndrome

Injectable therapy

- **Specific remedies:** GUNA-LUMBAR + GUNA-ISCHIAL

- Standard protocol for i.m. administration: 1-2 ampoules 1-3 times a week according to severity and progress.
- Standard protocol according to mesotherapeutic technique using 1-2 ampoules per treatment: 2 treatments per week for the first 2 weeks, then 1 treatment a week until pain relief (average 8-10 sessions). For chronic pathologies: continue with 1 treatment a week for 1 month until pain relief, then 1 treatment a month.

For further information and for the specific infiltration points see: www.gunainc.com - Products - All Products - Injectables for Pain Management and the Guna Brochure "Pain Management"

Oral therapy

- **Specific remedy:** GUNA-ARTHRO (10 drops every 15 minutes in the acute phase; continue with 10 drops 3 times a day for 30-60 days)
- **Drainage remedies:** GUNA-MATRIX (10 drops 3 times a day for 30-60 days) + GUNA-LYMPHO (10 drops 3 times a day for 30-60 days)
- **P.N.E.I. remedy:** GUNA-TRAUMA (10 drops 3 times a day for 30-60 days)

Sciatica

Injectable therapy

- **Specific remedies:** GUNA-ISCHIAL + GUNA-LUMBAR + GUNA-NEURAL

- Standard protocol for i.m. administration: 1-2 ampoules 1-3 times a week according to severity and progress.
- Standard protocol according to mesotherapeutic technique using 1-2 ampoules per treatment: 2 treatments per week for the first 2 weeks, then 1 treatment a week until pain relief (average 8-10 sessions). For chronic

pathologies: continue with 1 treatment a week for 1 month until pain relief, then 1 treatment a month.

For further information and for the specific infiltration points see: www.gunainc.com - Products - All Products - Injectables for Pain Management and the Guna Brochure "Pain Management"

Oral therapy

- **Specific remedy:** GUNA-TRAUMA (10 drops every 15 minutes in the acute phase; continue with 10 drops 3 times a day for 30-60 days)
- **Drainage remedies:** GUNA-MATRIX (10 drops 3 times a day for 30-60 days) + GUNA-LYMPHO (10 drops 3 times a day for 30-60 days)
- **P.N.E.I. remedy:** GUNA-FLAM (10 drops 3 times a day for 30-60 days)

Scoliosis

Injectable therapy

- **Specific remedies:** GUNA-THORACIC + GUNA-NEURAL + GUNA-MUSCLE
 - Standard protocol for i.m. administration: 1-2 ampoules 1-3 times a week according to severity and progress.
 - Standard protocol according to mesotherapeutic technique using 1-2 ampoules per treatment: 2 treatments per week for the first 2 weeks, then 1 treatment a week until pain relief (average 8-10 sessions). For chronic pathologies: continue with 1 treatment a week for 1 month until pain relief, then 1 treatment a month.

For further information and for the specific infiltration points see: www.gunainc.com - Products - All Products - Injectables for Pain Management and the Guna Brochure "Pain Management"

Oral therapy

- **Specific remedy:** GUNA-ARTHRO (10 drops every 15 minutes in the acute phase; continue with 10 drops 3 times a day for 30-60 days)
- **Drainage remedies:** GUNA-MATRIX (10 drops 3 times a day for 30-60 days) + GUNA-LYMPHO (10 drops 3 times a day for 30-60 days)
- **P.N.E.I. remedy:** GUNA-FEM/GUNA-MALE (10 drops 3 times a day for 30-60 days)

Scrofulosis (Consumption)

- **Specific remedy:** GUNA-TONSILS (3 pellets 3 times a day for 30-60 days)
- **Drainage remedy:** GUNA-LYMPHO (10 drops 3 times a day for 30-60 days)
- **P.N.E.I. remedy:** CITOMIX (3 pellets morning and evening for 30-60 days)

Seborrhea

- **Specific remedy:** GUNA-DERMO (10 drops 3 times a day for 30-60 days)
- **Drainage remedy:** GUNA-LIVER (3-5 pellets 3 times a day for 30-60 days)
- **P.N.E.I. remedy:** GUNA-FEM (10 drops 3 times a day for 30-60 days)

Sepsis

See Suppuration

Serous Otitis Media (Chronic)

(catarrh of the ear)

- **Specific remedy:** GUNA-RHINO NOSE SPRAY (2 squirts in each nostril 4-5 times a day for 30-60 days. In acute cases: 2 squirts in each nostril every 30 minutes for 2-3 hours)
- **Drainage remedy:** GUNA-LYMPHO (10 drops 3 times a day for 30-60 days)
- **P.N.E.I. remedy:** GUNA-FLAM (10 drops 3 times a day for 30-60 days)

Shingles

See Herpes Zoster

Shoulder-hand syndrome (Brachial Neuritis)

Injectable therapy

- **Specific remedies:** GUNA-SHOULDER + GUNA-POLYARTHROSIS or GUNA-NEURAL
 - Standard protocol for i.m. administration: 1-2 ampoules 1-3 times a week according to severity and progress.
 - Standard protocol according to mesotherapeutic technique using 1-2 ampoules per treatment: 2 treatments per week for the first 2 weeks, then 1 treatment a week until pain relief (average 8-10 sessions). For chronic pathologies: continue with 1 treatment a week for 1 month until pain relief, then 1 treatment a month.

For further information and for the specific infiltration points see: www.gunainc.com - Products - All Products - Injectables for Pain Management and the Guna Brochure "Pain Management"

Oral therapy

- **Specific remedy:** GUNA-TRAUMA (10 drops several times a day according to the clinical picture, continue with 10 drops 3 times a day for 30-60 days)
- **Drainage remedies:** GUNA-MATRIX (10 drops 3 times a day for 30-60 days)

- + GUNA-LYMPHO (10 drops 3 times a day for 30-60 days)
- **P.N.E.I. remedy:** GUNA-FLAM (10 drops 3 times a day for 30-60 days)

Shoulder Pain

Injectable therapy

- **Specific remedies:** GUNA-SHOULDER + GUNA-MUSCLE + GUNA-NEURAL
 - Standard protocol for i.m. administration: 1-2 ampoules 1-3 times a week according to severity and progress.
 - Standard protocol according to mesotherapeutic technique using 1-2 ampoules per treatment: 2 treatments per week for the first 2 weeks, then 1 treatment a week until pain relief (average 8-10 sessions). For chronic pathologies: continue with 1 treatment a week for 1 month until pain relief, then 1 treatment a month.

For further information and for the specific infiltration points see: www.gunainc.com - Products - All Products - Injectables for Pain Management and the Guna Brochure "Pain Management"

Oral therapy

- **Specific remedy:** GUNA-TRAUMA (10 drops several times a day according to the clinical picture, continue with 10 drops 3 times a day for 30-60 days)
- **Drainage remedies:** GUNA-MATRIX (10 drops 3 times a day for 30-60 days) + GUNA-LYMPHO (10 drops 3 times a day for 30-60 days)
- **P.N.E.I. remedy:** GUNA-FLAM (10 drops 3 times a day for 30-60 days)

Sinusitis, Acute

- **Specific remedies:** GUNA-SINUS NOSE SPRAY (2 squirts in each nostril, 4-5 times a day over extended periods of time. In acute cases, 2 squirts in each nostril every 30 minutes for 2-3 hours) + GUNA-FLAM (10 drops several times a day according to the clinical picture, continue with 10 drops 3 times a day for 30-60 days)
- **Drainage remedy:** GUNA-LYMPHO (10 drops 3 times a day for 30-60 days)
- **P.N.E.I. remedy:** GUNA-REACT (3 pellets 3 times a day for 30-60 days)

Sinusitis, Chronic

- **Specific remedies:** GUNA-SINUS NOSE SPRAY (2 squirts in each nostril, 4-5 times a day over extended periods of time) + GUNA-FLAM (10 drops 3 times a day for 30-60 days)
- **Drainage remedy:** GUNA-MATRIX (10 drops 3 times a day for 30-60 days)
- **P.N.E.I. remedy:** CITOMIX (3 pellets morning and evening for 30-60 days)

Sleep Disturbances

- **Specific remedies:** GUNA-SLEEP (20 drops 30 minutes before going to bed. In permanent cases, 10 drops every 30 minutes starting from 1/2 hour before going to sleep. It is advisable to take the medicine also over extended periods of time to achieve physiological rebalancing of the homeostatic mechanism) and ANTI AGE STRESS (3 pellets twice a day for 60 days)
- **P.N.E.I. remedies:** GUNA-FEM (10 drops 3 times a day for 30-60 days)/GUNA-MALE (10 drops 3 times a day for 30-60 days) + MELATONINA 4CH* (20 drops twice a day for 60 days)

Solar Dermatitis (Sun Rush)

- **Specific remedy:** TAMANU ARNICA (2 applications a day)
- **Drainage remedy:** GUNA-DERMO (10 drops 3 times a day in the phase)

Spondylosis

Injectable therapy

- **Specific remedies:** GUNA-THORACIC or GUNA-LUMBAR + GUNA-MUSCLE or GUNA-POLYARTHRITIS or GUNA-NEURAL
 - Standard protocol for i.m. administration: 1-2 ampoules 1-3 times a week according to severity and progress.
 - Standard protocol according to mesotherapeutic technique using 1-2 ampoules per treatment: 2 treatments per week for the first 2 weeks, then 1 treatment a week until pain relief (average 8-10 sessions). For chronic pathologies: continue with 1 treatment a week for 1 month until pain relief, then 1 treatment a month.

For further information and for the specific infiltration points see: www.gunainc.com - Products - All Products - Injectables for Pain Management and the Guna Brochure "Pain Management"

Oral therapy

- **Specific remedy:** GUNA-TRAUMA (10 drops several times a day according to the clinical picture, continue with 10 drops 3 times a day for 30-60 days)
- **Drainage remedies:** GUNA-MATRIX (10 drops 3 times a day for 30-60 days) + GUNA-LYMPHO (10 drops 3 times a day for 30-60 days)
- **P.N.E.I. remedy:** GUNA-FLAM (10 drops 3 times a day for 30-60 days)

Sports Injuries

See Wounds

Stasis, Venous

- **Specific remedy:** ANTI AGE VEIN (3 pellets 3 times a day for 30-60 days)
- **Drainage remedy:** GUNA-LYMPHO (10 drops 3 times a day for 30-60 days)
- **P.N.E.I. remedy:** GUNA-FEM (10 drops 3 times a day for 30-60 days)

Stomatitis

See Aphtha, Gingivitis.

Stress

- **Specific remedy:** ANTI AGE STRESS (3 pellets every 15 minutes in the acute phase; continue with 3 pellets 3 times a day for 60 days)
- **Drainage remedy:** GUNA-BOWEL (10 drops 3 times a day for 30-60 days)
- **P.N.E.I. remedies:** GUNA-FEM (10 drops 3 times a day for 30-60 days) /GUNA-MALE (10 drops 3 times a day for 30-60 days) + MELATONINA 4CH* (20 drops twice a day for 30-60 days)

Stye

- **Specific remedy:** BELLAPLEX* (3 pellets every hour until improvement of the clinical picture. Continue with 3 pellets 3 times a day for 15-30 days)
- **Drainage remedy:** GUNA-LIVER (3-5 pellets 3 times a day for 30 days and longer)
- **P.N.E.I. remedy:** GUNA-FLAM (10 drops 3 times a day for 30 days and longer)

Sunburn

- **Specific remedy:** TAMANU ARNICA (on average 2 applications a day)
- **Drainage remedy:** ANTI AGE SKIN (3 pellets 3 times a day for 30 days)

Sun Rush

See Solar Dermatitis

Suppuration (Sepsis)

- **Specific remedy:** GUNA-REACT (3 pellets every 15 minutes in the acute phase; continue with 3 pellets 3 times a day for 30 days)
- **Drainage remedy:** GUNA-LYMPHO (10 drops 3 times a day for 30 days)
- **P.N.E.I. remedy:** CITOMIX (10 pellets twice a day for 2-3 days; continue with 3 pellets 3 times a day for 30 days)

Synovitis

See Rheumatoid arthritis.

T

Teething, difficult

- **Specific remedy:** GUNA-THROAT Spray (2-3 squirts on the gums 2-3 times a day for 15-30 days)
- **Drainage remedy:** GUNA-LYMPHO (3 drops 3 times a day for 15-30 days)
- **P.N.E.I. remedy:** ANTI AGE STRESS (3 pellets twice a day for 15-30 days)

Telangiectasia

- **Specific remedy:** ANTI AGE VEIN (3 pellets 3 times a day for 30-60 days)
- **Drainage remedy:** GUNA-LIVER (3-5 pellets 3 times a day for 30-60 days)
- **P.N.E.I. remedy:** ANTI AGE PEL 2* (3 pellets 3 times a day for 30-60 days)

Tennis Elbow

Injectable therapy

- **Specific remedies:** GUNA-SHOULDER + GUNA-NEURAL
 - Standard protocol for i.m. administration: 1-2 ampoules 1-3 times a week according to severity and progress.
 - Standard protocol according to mesotherapeutic technique using 1-2 ampoules per treatment: 2 treatments per week for the first 2 weeks, then 1 treatment a week until pain relief (average 8-10 sessions). For chronic pathologies: continue with 1 treatment a week for 1 month until pain relief, then 1 treatment a month.

For further information and for the specific infiltration points see: www.gunainc.com - Products - All Products - Injectables for Pain Management and the Guna Brochure "Pain Management"

Oral therapy

- **Specific remedy:** GUNA-TRAUMA (10 drops several times a day according

to the clinical picture, continue with 10 drops 3 times a day for 30-60 days)

- **Drainage remedies:** GUNA-MATRIX (10 drops 3 times a day for 30-60 days)+ GUNA-LYMPHO (10 drops 3 times a day for 30-60 days)
- **P.N.E.I. remedy:** GUNA-FLAM (10 drops 3 times a day for 30-60 days)

Tenosynovitis

- **Specific remedy:** GUNA-TRAUMA (10 drops several times a day according to the clinical picture, continue with 10 drops 3 times a day for 30-60 days)
- **Drainage remedies:** GUNA-MATRIX (10 drops 3 times a day for 30-60 days) + GUNA-LYMPHO (10 drops 3 times a day for 30-60 days)
- **P.N.E.I. remedy:** GUNA-FLAM (10 drops 3 times a day for 30-60 days)

Thrombophlebitis

- **Specific remedy:** ANTI AGE VEIN (3 pellets every 15 minutes in the acute phase; continue with 3 pellets twice a day for 30 days)
- **Drainage remedy:** GUNA-LYMPHO (10 drops 3 times a day for 30 days)
- **P.N.E.I. remedy:** CITOMIX (10 pellets twice a day for 2-3 days; continue with 3 pellets 3 times a day for 30 days) or GUNA-FLAM (10 drops 3 times a day for 30 days)

Tinnitus

- **Specific remedy:** GUNA-DIZZY (10 drops several times a day according to the clinical picture, continue with 10 drops 3 times a day for 30-60 days) - ARD VESSEL (1 oral vial a day for 10 days per month for some months)
- **Drainage remedies:** GUNA-MATRIX (10 drops 3 times a day for 30-60 days)+ GUNA-LYMPHO (10 drops 3 times a day for 30-60 days) + GUNA-CELL (10 drops 3 times a day for 30-60 days)
- **P.N.E.I. remedy:** GUNA-FEM/GUNA-MALE (10 drops 3 times a day for 30-60 days)

TMJ Syndrome

See Arthritis.

Toning, total body (Aesthetic Medicine)

Injectable therapy:

- **Specific remedy:** OMEOFORMULA 3 - Tissue Tone + GUNA-COLLAGEN
- Standard protocol for i.m. administration: 1 ampoule 1-3 times a week

according to severity and progress.

- Standard protocol according to mesotherapeutic technique using 1 or more ampoules per treatment: 1 treatment a week (average 8-10 sessions). For a persisting and lasting results also a maintenance therapy is recommended; this should be structured in "boosters" of 3-4 sessions once or twice a year.

For further information see Guna Brochure "Omeoformula"

Oral therapy:

- **Specific remedy:** ANTI AGE SKIN (3 pellets 3 times a day for 60-90 days)
- **Drainage remedy:** GUNA-CELL (10 drops 3 times a day for 60-90 days)
- **P.N.E.I. remedy:** GUNA-FEM (10 drops 3 times a day for 60-90 days)

Tonsillar Hypertrophy

- **Specific remedy:** GUNA-TONSILS (3 pellets 3 times a day for 30-60 days)
- **Drainage remedy:** GUNA-LYMPHO (10 drops 3 times a day for 30-60 days. Children: half dose)
- **P.N.E.I. remedy:** CITOMIX (10 pellets twice a day for 2-3 days; continue with 3 pellets 3 times a day for 30-60 days)

Tonsillitis

- **Specific remedy:** GUNA-TONSILS (3 pellets every 15-30 minutes in the acute phase; continue with 3 pellets 3 times a day for 15 days) or GUNA THROAT SPRAY (1 squirt 3-6 times a day on the affected area for 15 days. During the acute phase 1 squirt every 30 minutes for 10 days)
- **Drainage remedy:** GUNA-LYMPHO (10 drops 3 times a day for 30 days)
- **P.N.E.I. remedy:** in acute cases: CITOMIX (10 pellets twice a day for 2-3 days; continue with 3 pellets 3 times a day for 7 days); in chronic cases: CITOMIX (10 pellets twice a day for 2-3 days; continue with 3 pellets 3 times a day for 30 days)

Tooth Extraction

- **Specific remedies:** GUNA-FLAM (10 drops 3 times a day starting some days before extraction. Soon after extraction: 10 drops every 15 minutes in the acute phase; continue with 10 drops 3 times a day for 15 days) + GUNA-THROAT SPRAY (1 squirt every 30 minutes 8 times a day)
- **Drainage remedy:** GUNA-LYMPHO (10 drops every 15 minutes in the acute phase; continue with 10 drops 3 times a day for 15-30 days)

Torticollis

Injectable therapy

- **Specific remedies:** GUNA-NECK + GUNA-MUSCLE + GUNA-NEURAL
 - Standard protocol for i.m. administration: 1-2 ampoules 1-3 times a week according to severity and progress.
 - Standard protocol according to mesotherapeutic technique using 1-2 ampoules per treatment: 2 treatments per week for the first 2 weeks, then 1 treatment a week until pain relief (average 8-10 sessions). For chronic pathologies: continue with 1 treatment a week for 1 month until pain relief, then 1 treatment a month.

For further information and for the specific infiltration points see: www.gunainc.com - Products - All Products - Injectables for Pain Management and the Guna Brochure "Pain Management"

Oral therapy

- **Specific remedy:** GUNA-TRAUMA (10 drops several times a day according to the clinical picture, continue with 10 drops 3 times a day for 30-60 days)
- **Drainage remedies:** GUNA-MATRIX (10 drops 3 times a day for 30-60 days)+ GUNA-LYMPHO (10 drops 3 times a day for 30-60 days)
- **P.N.E.I. remedy:** GUNA-FLAM (10 drops 3 times a day for 30-60 days)

Tracheitis

- **Specific remedy:** GUNA-FLU (1 tube every 6 hours in the acute phase). In prevention: (1 tube a week for 6 weeks)
- **Drainage remedy:** GUNA-COUGH (one 10 ml dose 3 to 6 times a day for 30 days. Paediatric dosage: one 5 ml dose 3 to 6 times a day for 30 days)
- **P.N.E.I. remedy:** CITOMIX (10 pellets twice a day for 2-3 days; continue with 3 pellets 3 times a day for 15 days)

Trigeminal Neuralgia

Injectable therapy

- **Specific remedy:** GUNA-NEURAL
 - Standard protocol for i.m. administration: 1-2 ampoules 1-3 times a week according to severity and progress.
 - Standard protocol according to mesotherapeutic technique using 1-2 ampoules per treatment: 2 treatments per week for the first 2 weeks, then 1 treatment a week until pain relief (average 8-10 sessions). For chronic pathologies: continue 1 treatment a week for 1 month until pain relief, then 1 treatment a month.

For further information and for the specific infiltration points see: www.gunainc.com - Products - All Products - Injectables for Pain Management and the Guna Brochure "Pain Management"

Oral therapy

- **Specific remedy:** GUNA-TRAUMA (10 drops several times a day according to the clinical picture, continue with 10 drops 3 times a day for 30-60 days)
- **Drainage remedies:** GUNA-MATRIX (10 drops 3 times a day for 30-60 days)+ GUNA-LYMPHO (10 drops 3 times a day for 30-60 days)
- **P.N.E.I. remedy:** GUNA-FLAM (10 drops 3 times a day for 30-60 days)

Trigger Point Therapy

Injectable therapy

- **Specific remedies:** GUNA-MUSCLE + GUNA-NEURAL
 - Standard protocol for i.m. administration: 1-2 ampoules 1-3 times a week according to severity and progress.
 - Standard protocol according to mesotherapeutic technique using 1-2 ampoules per treatment: 2 treatments per week for the first 2 weeks, then 1 treatment a week until pain relief (average 8-10 sessions). For chronic pathologies: continue with 1 treatment a week for 1 month until pain relief, then 1 treatment a month.

For further information and for the specific infiltration points see: www.gunainc.com - Products - All Products - Injectables for Pain Management and the Guna Brochure "Pain Management"

Oral therapy

- **Specific remedy:** GUNA-TRAUMA (10 drops every 15 minutes in the acute phase; continue with 10 drops 3 times a day for 30-60 days)
- **Drainage remedies:** GUNA-MATRIX (10 drops 3 times a day for 30-60 days) + GUNA-LYMPHO (10 drops 3 times a day for 30-60 days)
- **P.N.E.I. remedy:** GUNA-FLAM (10 drops 3 times a day for 30-60 days)

U

Ulcerative Colitis (UC)

- **Specific remedies:** EUBIOFLOR (10 drops 3 times a day for 30-60 days) + GUNA-BOWEL (10 drops 3 times a day for 30-60 days) + GUNA-FLAM (10 drops 3 times a day for 30-60 days)
- **Drainage remedy:** GUNA-CELL (10 drops 3 times a day for 30-60 days)
- **P.N.E.I. remedy:** ANTI AGE STRESS (3 pellets 3 times a day for 30-60 days)

Unrest, Motor

See Restless leg syndrome.

Urinary Tract Infection, acute

- **Specific remedy:** GUNA-REACT (3 pellets every 15-30 minutes in the acute phase; continue with 3 times a day for 30-60 days)
- **Drainage remedy:** GUNA-KIDNEY (10 drops 3 times a day for 30-60 days)
- **P.N.E.I. remedy:** GUNA-FLAM (10 drops 3 times a day for 30-60 days)

Urinary Tract Infection, chronic

- **Specific remedy:** GUNA-REACT (3 pellets every 15-30 minutes in the acute phase; continue with 3 times a day for 30-60 days)
- **Drainage remedies:** GUNA-KIDNEY (10 drops 3 times a day for 30-60 days) + EUBIOFLOR (10 drops 3 times a day for 30-60 days)
- **P.N.E.I. remedy:** CITOMIX (3 pellets morning and evening for 30-60 days)

Urticaria

- **Specific remedies:** GUNA ALLERGY-PREV (10 drops 3 times a day for 30-60 days) + TAMANU ARNICA (on average 2 applications a day)
- **Drainage remedy:** GUNA-LYMPHO (10 drops 3 times a day for 30-60 days)
- **P.N.E.I. remedy:** GUNA-MOOD (10 drops 3 times a day for 30-60 days)

V

Vaginitis

- **Specific remedy:** NATUR 1* (1 ovule morning and evening for the first 15 days. Continue with 1 ovule in the evening for further 45 days) - GUNA-REACT (3 pellets every 15 minutes in the acute phase; continue with 3 pellets 3 times a day for 30-60 days)
- **Drainage remedies:** GUNA-LYMPHO (10 drops 3 times a day for 30-60 days) + EUBIOFLOR (10 drops 3 times a day for 30-60 days)
- **P.N.E.I. remedy:** GUNA-FEM (10 drops 3 times a day for 30-60 days)

Vaginitis, Atrophic

- **Specific remedy:** NATUR 2* (1 topical application a day morning and evening and before sexual intercourses)
- **Drainage remedies:** GUNA-MATRIX (10 drops 3 times a day for 30-60 days) + GUNA-CELL (10 drops 3 times a day for 30-60 days)
- **P.N.E.I. remedy:** GUNA-FEM (10 drops 3 times a day for 30-60 days)

Varicose Veins

- **Specific remedy:** ANTI AGE VEIN (3 pellets 3 times a day for 30-60 days)
- **Drainage remedy:** GUNA-LYMPHO (10 drops 3 times a day for 30-60 days)
- **P.N.E.I. remedy:** GUNA-FEM (10 drops 3 times a day for 30-60 days)

Verrucae

(Warts)

- **Specific remedies:** GUNA-VIRUS (3 pellets 3 times a day for 30-60 days) + GUNA-TF PAPILOMA (1 capsule a day Monday to Friday for 60-90 days)
- **Drainage remedy:** GUNA-MATRIX (10 drops 3 times a day for 30-60 days)
- **P.N.E.I. remedy:** CITOMIX (10 pellets twice a day for 2-3 days; continue with 3 pellets 3 times a day for 30-60 days)

Vertigo

- **Specific remedy:** GUNA-DIZZY (10 drops every 15-30 minutes in the acute phase; continue with 3 times a day for 30-60 days)

* Not yet available in the U.S.A.

- **Drainage remedy:** GUNA-CELL (10 drops 3 times a day for 30-60 days)
- **P.N.E.I. remedy:** GUNA-FEM (10 drops 3 times a day for 30-60 days)/GUNA-MALE (10 drops 3 times a day for 30-60 days)

Viral Diseases

- **Specific remedy:** GUNA-VIRUS (3 pellets every 15 minutes as a shock therapy; continue with 3 pellets 3 times a day for 30-60 days)
- **Drainage remedy:** GUNA-CELL (10 drops 3 times a day for 30-60 days)
- **P.N.E.I. remedy:** CITOMIX (10 pellets twice a day for 2-3 days; continue with 3 pellets 3 times a day for 30-60 days)

Vulvovaginitis

- **Specific remedies:** NATUR 1* (1 ovule morning and evening for the first 15 days. Continue with 1 ovule in the evening for another 45 days).- In cases of acute vulvovaginitis: NATUR 2* (1 topical application morning and evening for 30-60 days)
- **Drainage remedy:** GUNA-LYMPHO (10 drops 3 times a day for 30-60 days)
- **P.N.E.I. remedy:** GUNA-FEM (10 drops 3 times a day for 30-60 days)

W

Warts

See Verrucae

Whiplash

Injectable therapy:

- **Specific remedies:** GUNA-NECK + GUNA-MUSCLE + GUNA-NEURAL
 - Standard protocol for i.m. administration: 1-2 ampoules 1-3 times a week according to severity and progress.
 - Standard protocol according to mesotherapeutic technique using 1-2 ampoules per treatment: 2 treatments per week for the first 2 weeks, then 1 treatment a week until pain relief (average 8-10 sessions). For chronic pathologies: continue with 1 treatment a week for 1 month until pain relief,

then 1 treatment a month.

For further information and for the specific infiltration points see: www.gunainc.com - Products - All Products - Injectables for Pain Management and the Guna Brochure "Pain Management"

Oral therapy

- **Specific remedy:** GUNA-TRAUMA (10 drops 3 times a day for 30-60 days)
- **Drainage remedies:** GUNA-MATRIX + GUNA-LYMPHO (10 drops each 3 times a day for 30-60 days)
- **P.N.E.I. remedy:** GUNA-ARTHRO (10 drops 3 times a day for 30-60 days)

Wounds

- **Specific remedies:** GUNA-TRAUMA (10 drops several times a day according to the clinical picture, continue with 10 drops 3 times a day for 30-60 days) + TAMANU ARNICA (apply a thin layer on the interested part several times)
- **Drainage remedies:** GUNA-MATRIX (10 drops 3 times a day for 30-60 days) + GUNA-LYMPHO (10 drops 3 times a day for 30-60 days)
- **P.N.E.I. remedy:** GUNA-FLAM (10 drops 3 times a day for 30-60 days)

Wrinkles

Injectable therapy:

- **Specific remedies:** MADE + GUNA-COLLAGEN
 - Standard protocol for i.m. administration: 1 ampoule 1-3 times a week according to severity and progress.
 - Standard protocol according to mesotherapeutic technique using 1 or more ampoules per treatment: 1 treatment a week (average 8-10 sessions). For a persisting and lasting results, maintenance therapy is recommended; this should be delivered in "boosters" of 3-4 sessions once or twice a year.

For further information see Guna Brochure "Omeoformula"

Oral therapy:

- **Specific remedy:** ANTI AGE SKIN (3 pellets 3 times a day for 60-90 days)
- **Drainage remedy:** GUNA-CELL (10 drops 3 times a day for 60-90 days)
- **P.N.E.I. remedy:** GUNA-FEM (10 drops 3 times a day for 60-90 days)